

ORINDA UNION SCHOOL DISTRICT

8 Altarinda Rd.
Orinda, CA 94563-2603

Phone: (925) 254-4901

SchoolWorks, Inc.

8700 Auburn Folsom Rd, 200
Granite Bay, CA 95746

Phone: 916-733-0402

2023/24 DEMOGRAPHICS AND ENROLLMENT PROJECTIONS

FEBRUARY 2024



DRAFT

TABLE OF CONTENTS

	Page
EXECUTIVE SUMMARY	1
INTRODUCTION.....	3
METHODOLOGY	4
DISTRICT BOUNDARIES.....	6
HISTORIC BIRTH RATES	8
CLASSROOM COUNTS AND CAPACITY	14
SCHOOL PROJECTIONS.....	15
SCHOOL FACILITY UTILIZATION	31

DRAFT

CHARTS

	Page
10 YEAR ENROLLMENT HISTORY AND 6 YEAR ENROLLMENT PROJECTIONS.....	2
KINDERGARTEN PROJECTIONS BASED ON BIRTHS.....	8
KINDERGARTEN ENROLLMENT TO BIRTH RATIO	10
TK PROJECTIONS BASED ON BIRTHS	11
TK/K ENROLLMENT PLANNING	12
COHORT CHANGE SINCE KINDERGARTEN	12
HISTORIC ENROLLMENT AND COHORTS	13
LOADING STANDARDS.....	15
CAPACITY & PROJECTED ENROLLMENT	
DEL REY ELEM.....	17
GLORIETTA ELEM.....	19
SLEEPY HOLLOW ELEM.....	21
WAGNER RANCH ELEM	23
ORINDA INTERMEDIATE.....	25
STUDENT ATTENDANCE MATRIX.....	26
STUDENT RESIDENTS & ENROLLMENT	27
10 YEAR ENROLLMENT HISTORY AND 6 YEAR ENROLLMENT PROJECTIONS.....	28
ENROLLMENT PROJECTION SUMMARY BY GRADE	29
ENROLLMENT PROJECTION SUMMARY BY SCHOOL	29
ENROLLMENT PROJECTIONS BY SCHOOL AND GRADE.....	30
SCHOOL FACILITY UTILIZATION	31

DRAFT

MAPS

	Page
DISTRICT MAP WITH STUDENT RESIDENTIAL LOCATIONS.....	6
SCHOOL LOCATIONS AND ELEMENTARY BOUNDARIES.....	7
ZIP CODE MAP	9
SCHOOL BOUNDARY MAPS	
DEL REY ELEM.....	16
GLORIETTA ELEM.....	18
SLEEPY HOLLOW ELEM.....	20
WAGNER RANCH ELEM	22
ORINDA INTERMEDIATE.....	24
SCHOOL FACILITY UTILIZATION – ELEMENTARY SCHOOLS	32

DRAFT

EXECUTIVE SUMMARY

Orinda Union School District consists of four elementary schools and one intermediate school. Orinda Union School District has had a stable enrollment over the past ten years from an enrollment of 2,529 students during the 2014/15 school year to the current enrollment of 2,550 students.

Orinda Union School District is projected to grow in enrollment by 1.45% (or 37 students) for the 2024/25 school year. The expanding TK program is projected to have an impact of 8 new TK students next year. The District is projected to have a stable enrollment over the next six years, with a projected 2,556 students in the 2029/30 school year. This is a total growth of 6 students, which is an increase of 0.24%. The expanding TK program is projected to have an impact of 47 new TK students over the next six years.

Based on current District loading standards and classroom space, the District has a net classroom capacity of 1,958 elementary school students and 1,118 intermediate school students, and a current enrollment of 1,730 elementary school students and 820 intermediate school students. This gives the District a current utilization factor of 88.4% for the elementary schools and 73.3% for the intermediate schools. The projected utilization factor in six years will be 87.8% for the elementary schools and 74.9% for the intermediate schools. This assumes loading standards remain constant and no additional facilities are built or removed.

This report includes the anticipated growth in the Transitional Kindergarten program to reflect the recent “TK for All” initiative which will allow a phased plan for all 4 year olds to attend TK over the next two years. The projections in this report assume TK will be offered at each elementary site as the numbers will justify classes for each campus.

These projections assume the transfers between schools remain consistent. If changes in facilities, schedules, programs or policies are made, then the patterns may be impacted.

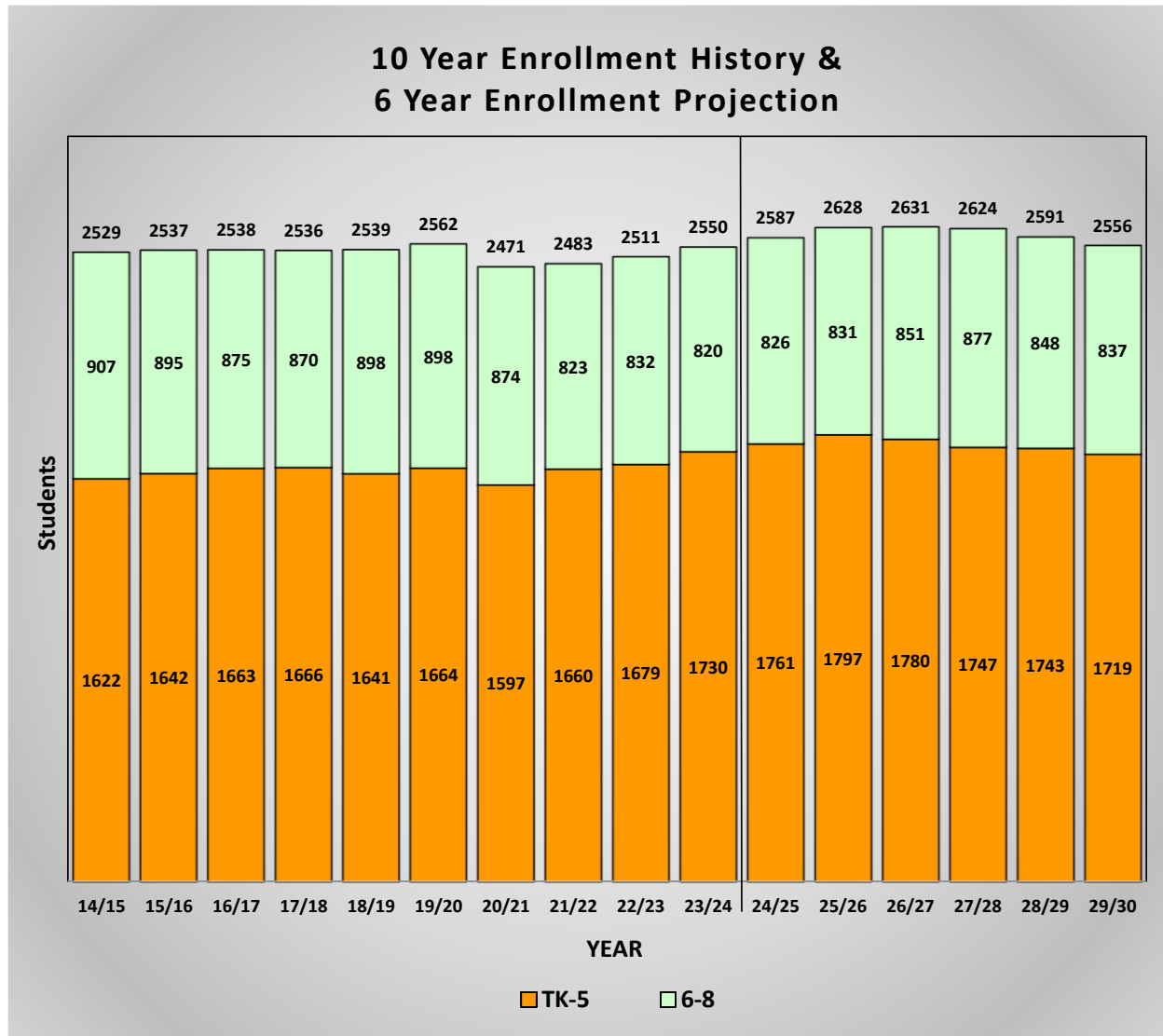
DRAFT

Orinda Union School District

2023/24 Demographics and Enrollment Projections

Ten Year Enrollment History and Six Year Enrollment Projections

This graph shows a summary of the projections for the entire District. It shows the current enrollment for 2023/24, the historic enrollment for the past nine years, and the projected enrollment for the next six years. The end result is a total of 2,556 students in the District in 2029/30.



The Orinda Union School District has had a stable enrollment over the past ten years from an enrollment of 2,529 in 2014/15 to the current enrollment of 2,550.

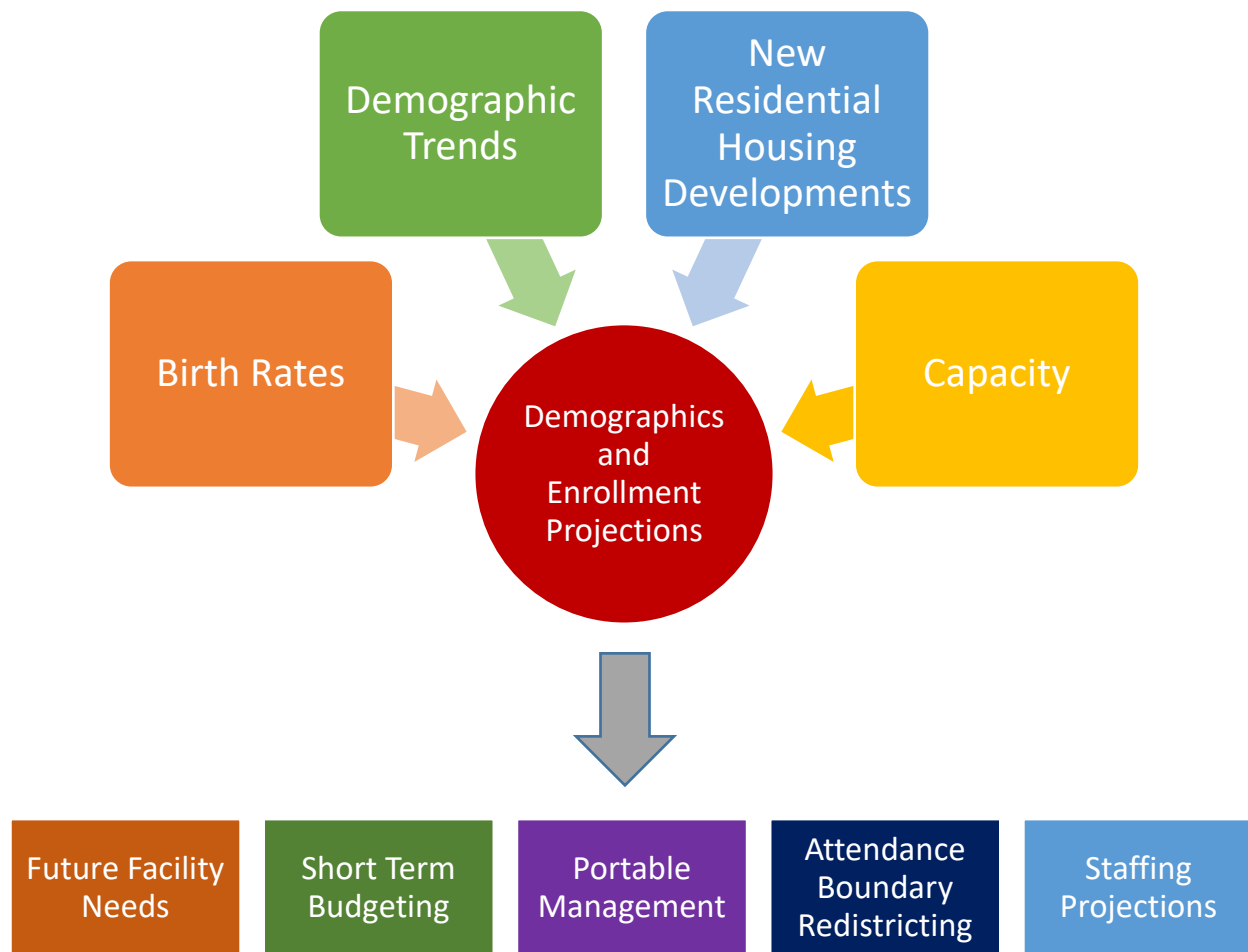
This graph is color coded by grade groupings:

Orange represents the historic and projected enrollment for the elementary school grades TK-5.
Green represents the historic and projected enrollment for the intermediate school grades 6-8.

The entire District enrollment is shown at the top of each bar.

INTRODUCTION

This Demographics and Enrollment Projections Study provides a comprehensive enrollment analysis for the Orinda Union School District. The district-wide and school-specific enrollment projections are meant to serve as a planning tool to help with both long- and short-term planning. Demographic Studies examine the factors that influence school enrollments, namely trends in demographics, birth rates, and housing development. They are also used as a tool to identify certain facility planning requirements such as capacity, utilization of existing facilities, planning for modernization or new construction, and attendance boundary redistricting.

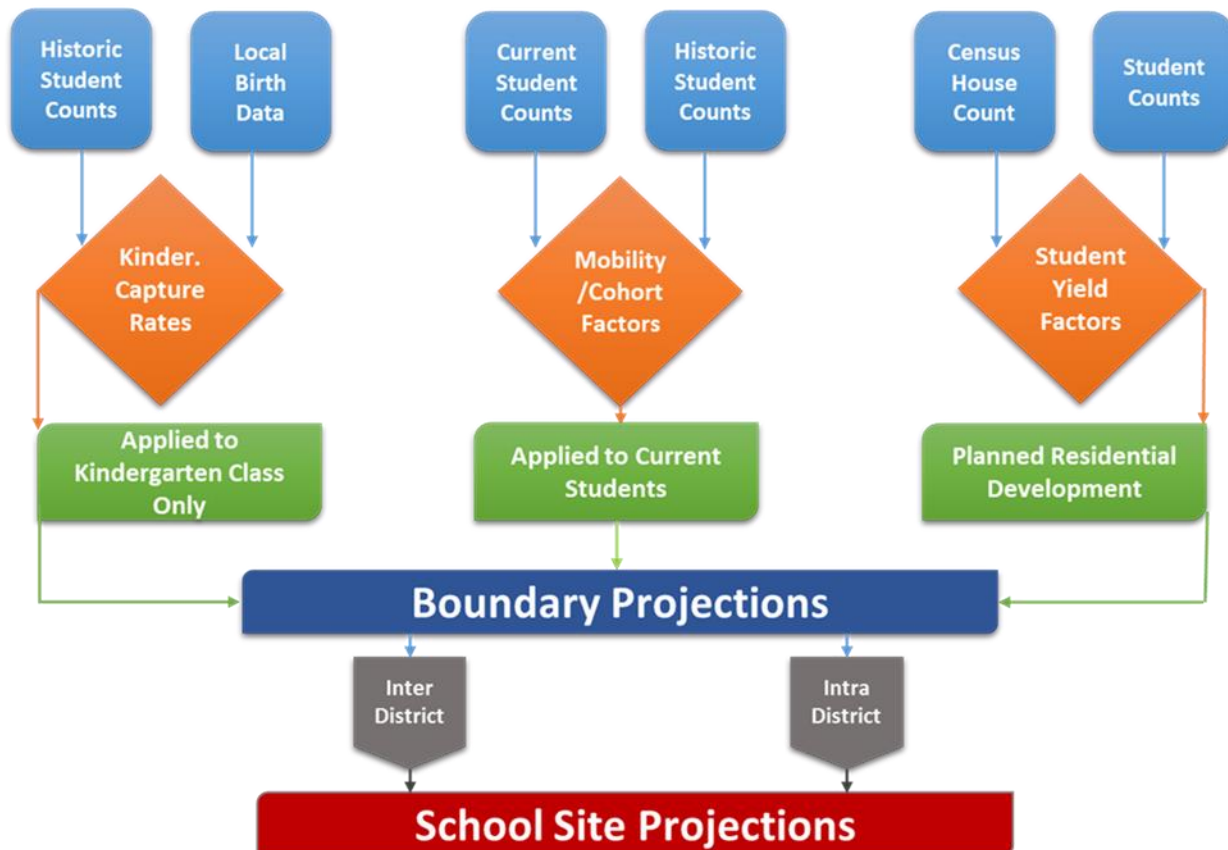


This Study provides information based on the 2023/24 District enrollments and programs, local planning policies and residential development. As these factors change and timelines are adjusted, the Demographic and Enrollment Projections Study should be revised to reflect the most current information.

DRAFT

METHODOLOGY

The chart below summarizes the inputs to calculate the boundary and school site projections.



The **enrollment projections** for each school are generated using a State standard weighted cohort trend analysis. The basic projections are created by studying the individual geographic areas. Once the trends are analyzed for each area, the base projections are modified using the following procedures:

- Birth rates** are used to project future kindergarten and transitional kindergarten enrollment. It is assumed if the births indicate there was an increase of 4% one year, then there will be a corresponding 4% increase in the kindergarten class five years later or the transitional kindergarten class four years later.
- New Housing Development rates** and **yield rates** are compared to the historical impact of development, and if the future projections exceed the historical values, the projections are augmented accordingly.
- Inter-District student** counts are not included in the base geographic trend analysis since these students reside outside of the District. Therefore, the current number of students-per-school and students-per-grade are added to the base projections.

DRAFT

- d) **Intra-District students** are those who transfer from one school to another. The number of students transferring into and out of each school are calculated and used to determine the difference between the projections for students living in each attendance area versus those that are projected to attend the school.
- e) The projections for **special education students** and **alternative programs** are created by assuming those programs typically serve a percentage of the total District population. Therefore, as the District grows or declines, the enrollment in those programs would increase or decrease accordingly.
- f) **Cohort Trend Analysis:** The number of students living in the boundary are used to generate the cohort factors. The annual trends over the past three years were analyzed and the average cohort was calculated with the current year weighted 50%, the prior year 33.3% and the last year 16.7%. This gives the current trends more value in determining the projections. Those cohorts are then used to determine the students who will be residing in each attendance area for the following years.

Neighborhood School Attendance Area Analysis: Each school attendance boundary is input into our GIS (Geographic Information Systems) Software. Students are counted in each of the attendance area boundaries based on their residential address and can be studied to view optimum and balanced utilizations. Attendance pattern maps for each individual boundary will analyze impacts of intra-district transfers from within the district boundary, as well as inter-district transfers from neighboring school districts.

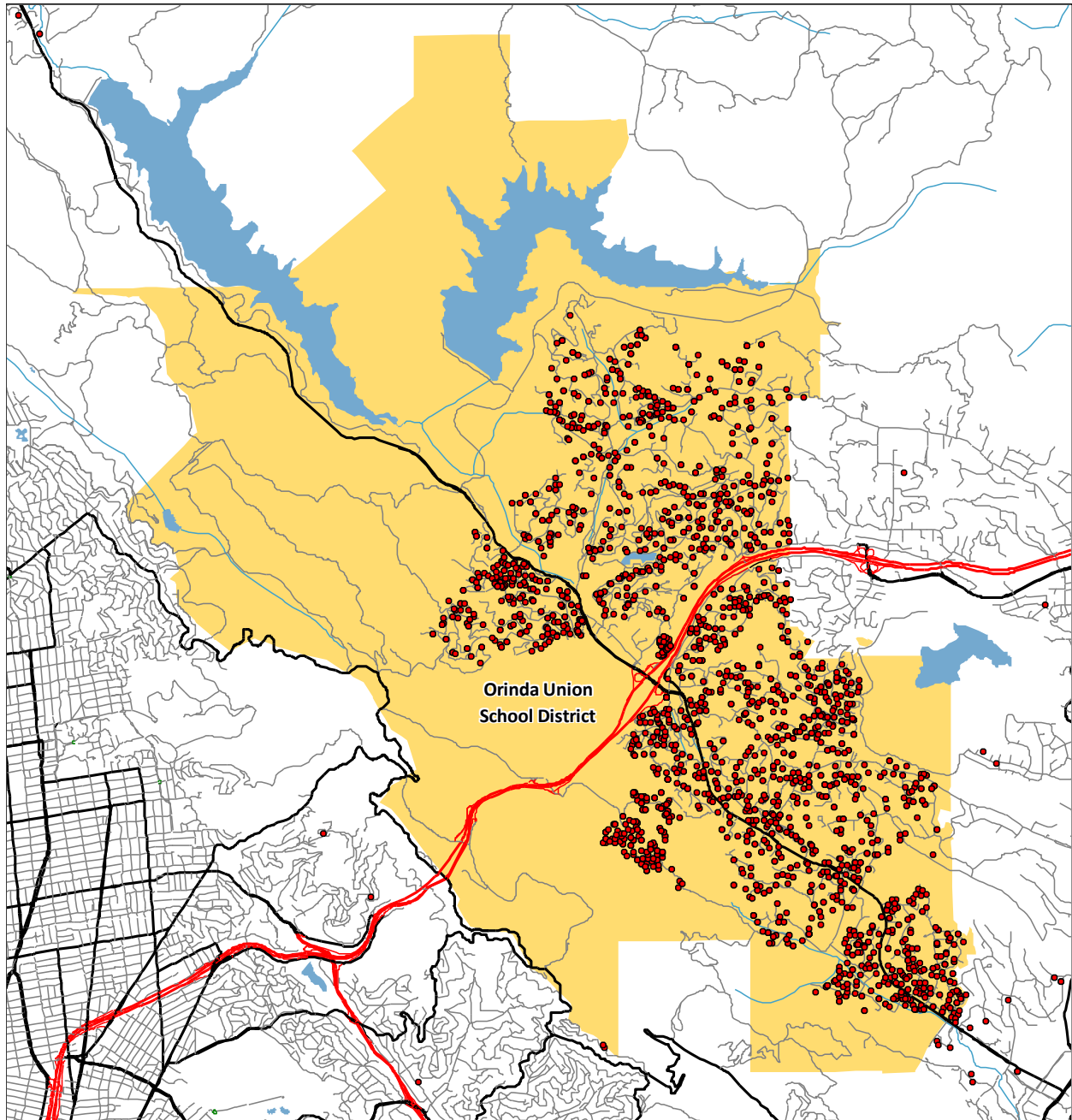
“TK for All” Initiative: This report models the growth projected for Transitional Kindergarten in alignment with the recent “TK for All” initiative which follows a phased plan to allow all 4 year olds to attend TK by 2025/26. This includes the assumption that TK will be offered at all sites that currently house K students. The expansion for TK enrollment is based on the following schedule:

- 2023/24 – 7 months (Currently eligible)
- 2024/25 – 9 months (Adds 2 months)
- 2025/26 – 12 months (Adds 3 months)

DRAFT

DISTRICT BOUNDARIES

District Map with Student Residential Locations



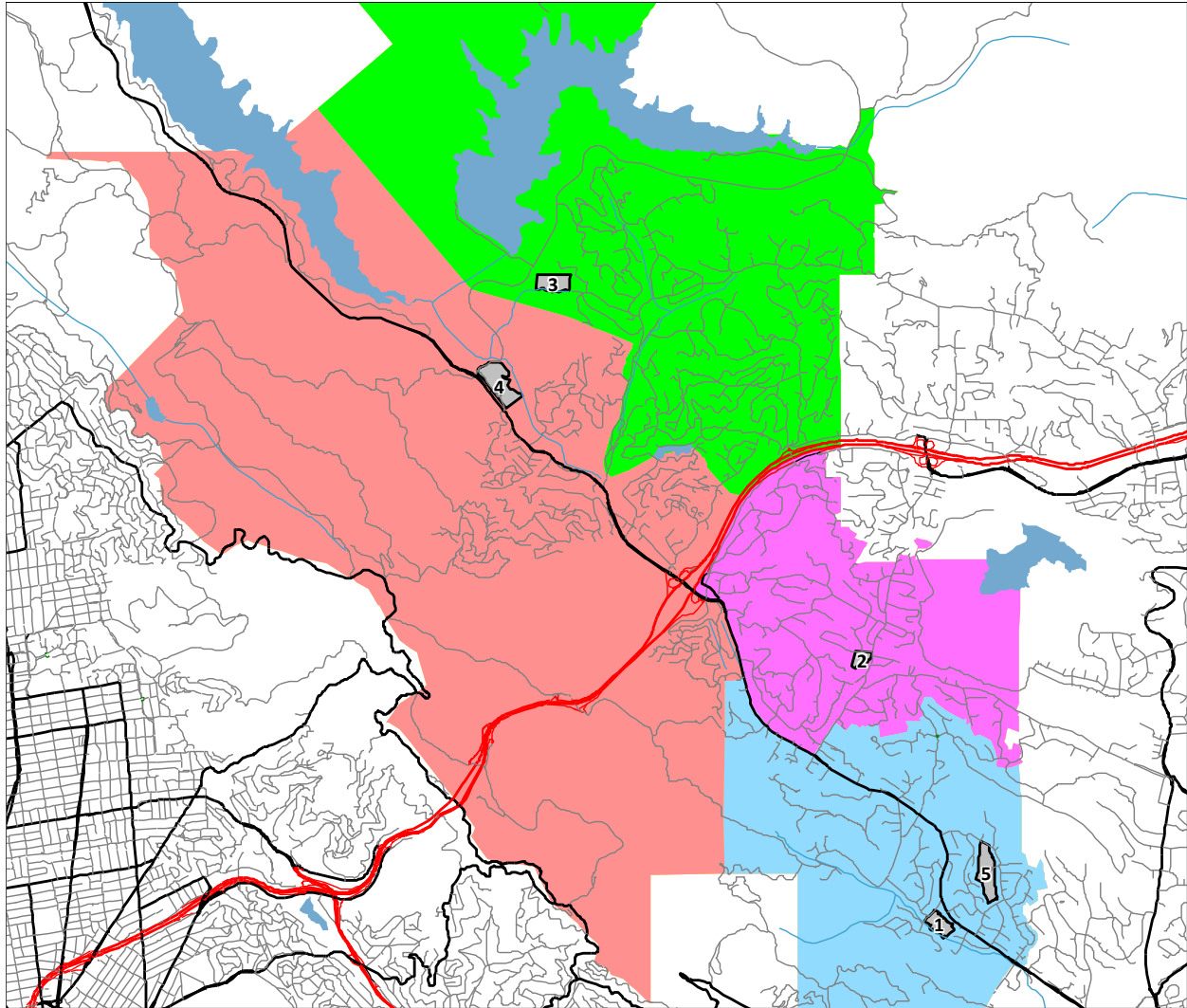
This map shows the District boundary along with the location of each student based on their residential address. This geographic data is the foundation for our demographic analysis. Any red dots outside the District boundary will represent students attending one of the District schools or programs but have a residence outside the District. This map also identifies different areas of student population density.

DRAFT

Orinda Union School District

2023/24 Demographics and Enrollment Projections

School Locations and Elementary Boundaries



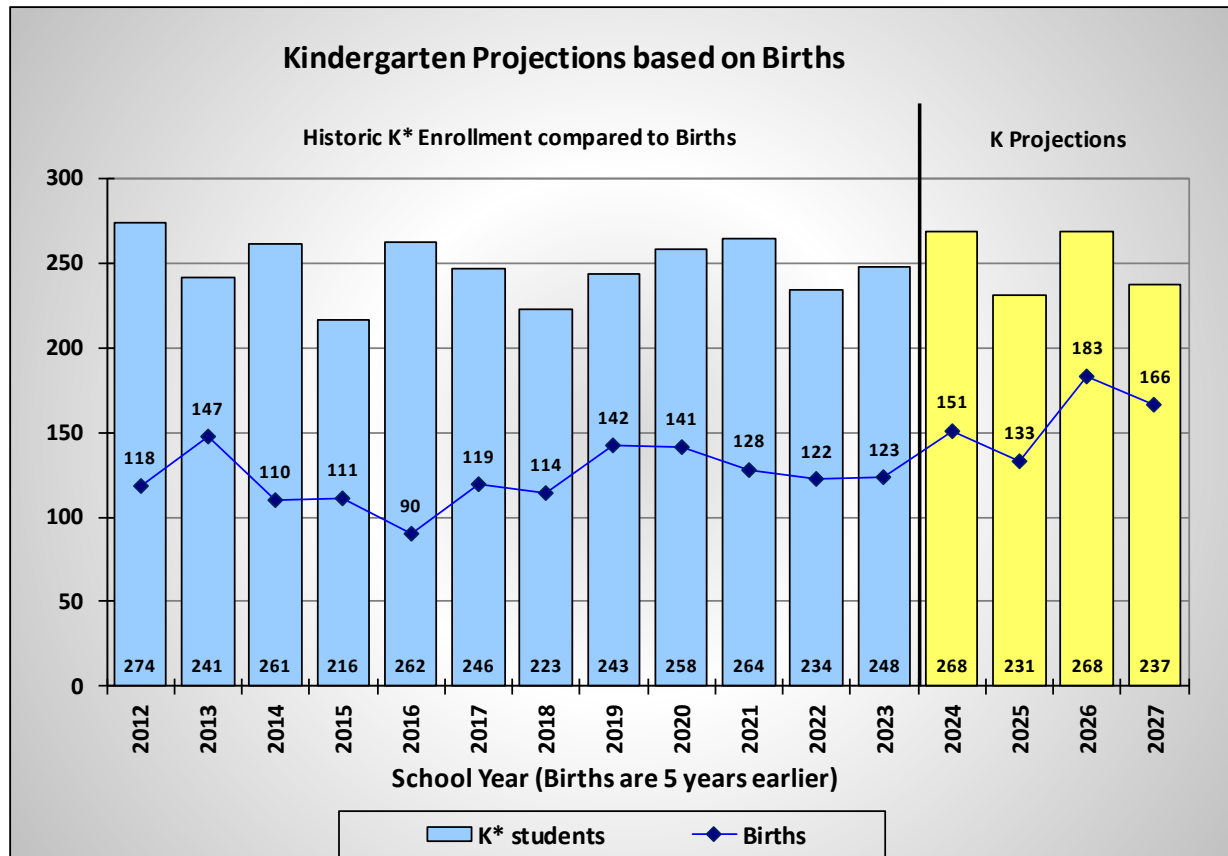
<u>Id</u>	<u>School</u>	<u>Grades</u>	<u>Id</u>	<u>School</u>	<u>Grades</u>
1	Del Rey Elementary	TK-5	4	Wagner Ranch Elementary	TK-5
2	Glorietta Elementary	TK-5	5	Orinda Intermediate	6-8
3	Sleepy Hollow Elementary	TK-5			

Orinda Union School District elementary boundaries are shown in color shaded areas.

DRAFT

HISTORIC BIRTH RATES

The following section is an analysis of the number of births in the Orinda Union School District. The number of births are compiled by zip code regions and provided by the Department of Health. The zip code areas do not exactly match the District boundaries and therefore the zip code 94563, which is in the District, was used for this analysis.



*Kindergarten Totals may include some Transitional Kindergarten students for some of the past years to more accurately correlate a 12-month period of births to a 12-month period of enrollment.

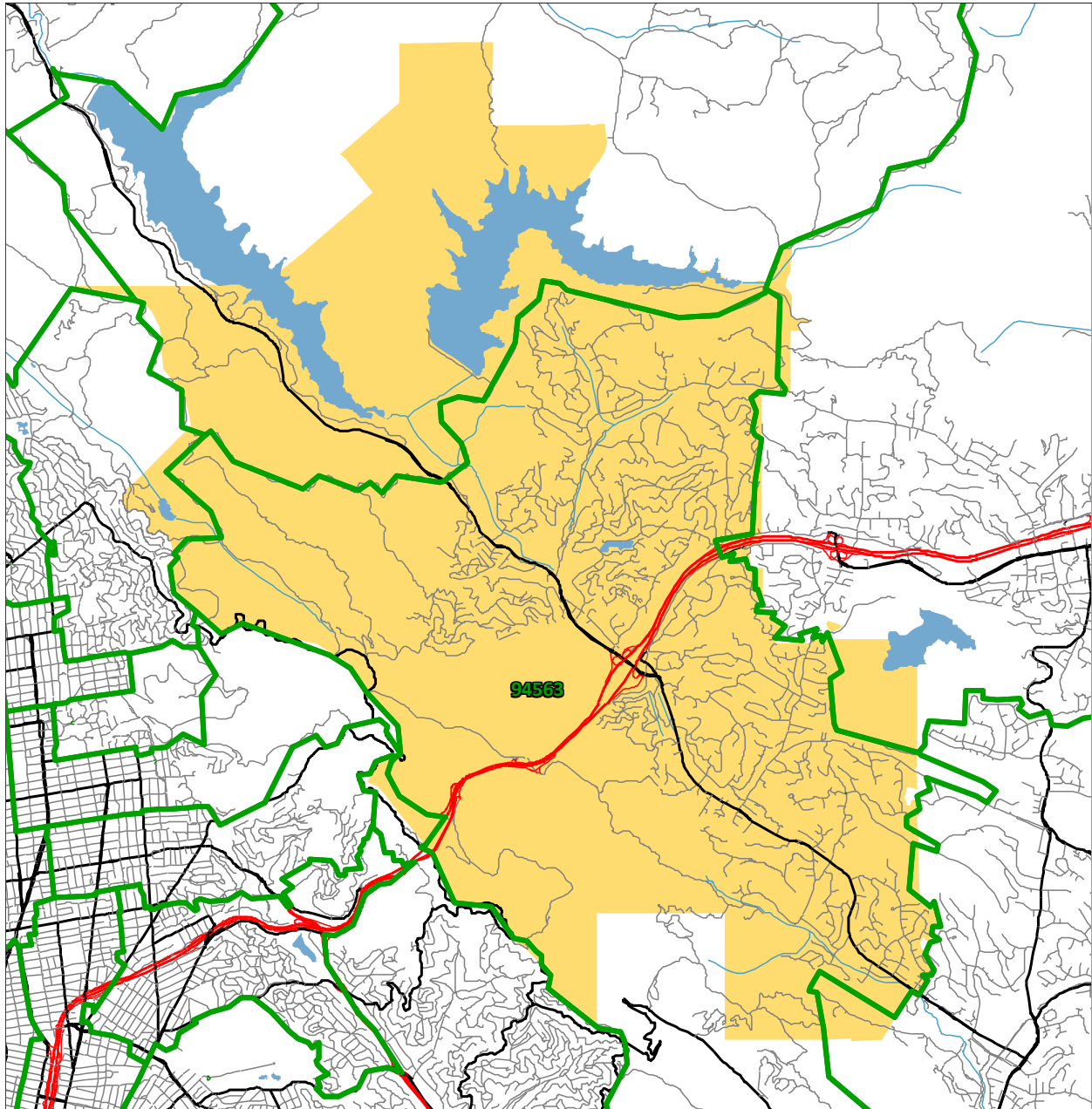
The above figure illustrates the correlation between births in the District area and the number of kindergarten students attending Orinda Union schools five years later. The number of births between 2007 and 2018 has averaged about 122 per year. The recent birth rates over the past four years (2019 to 2022), which will generate the kindergarten classes for the next four years (2024 to 2027), have been between 133 and 183. We have assumed a kindergarten capture rate of 190% for the projections.

The births in the 94563 zip code have been increasing over the last 12 years (from 119 births in 2012 to 166 births in 2022).

DRAFT

Orinda Union School District
2023/24 Demographics and Enrollment Projections

Zip Code Map



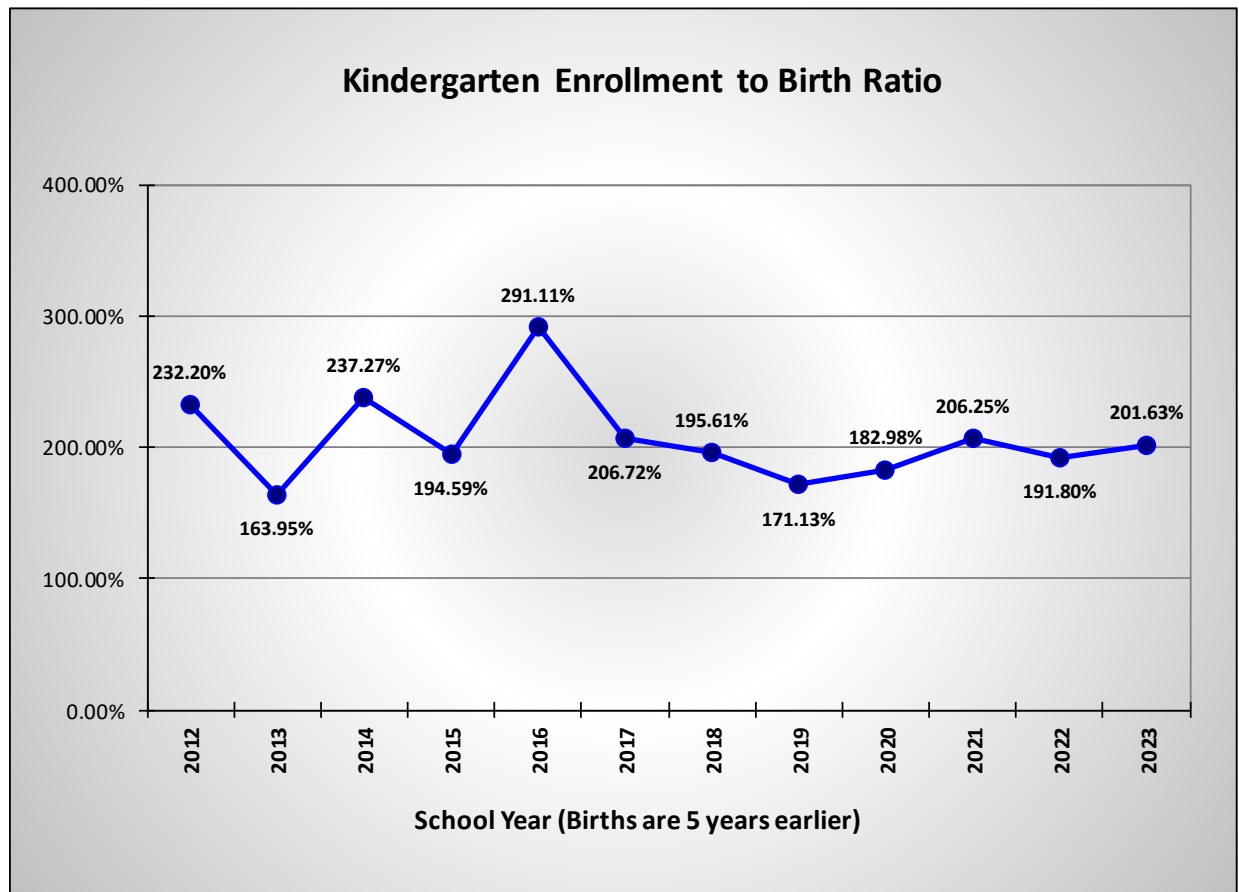
The above map shows the comparison between the District boundaries and the zip codes. The 94563 zip code covers the majority of the District.

DRAFT

Orinda Union School District

2023/24 Demographics and Enrollment Projections

Historic Kindergarten Capture Rates



This figure shows the kindergarten capture rates for the past 12 years. Since the birth data is derived from zip code areas, which do not exactly match with the District boundaries, the capture rate also accounts for differences in the coverage areas. Low capture rates are common when a district serves only a portion of a large zip code area. A large capture rate is possible when families move into the area after the children were born, but before they arrived for kindergarten. Overall, the District has had a stable capture rate with a 12 year average of 206.27%.

DRAFT

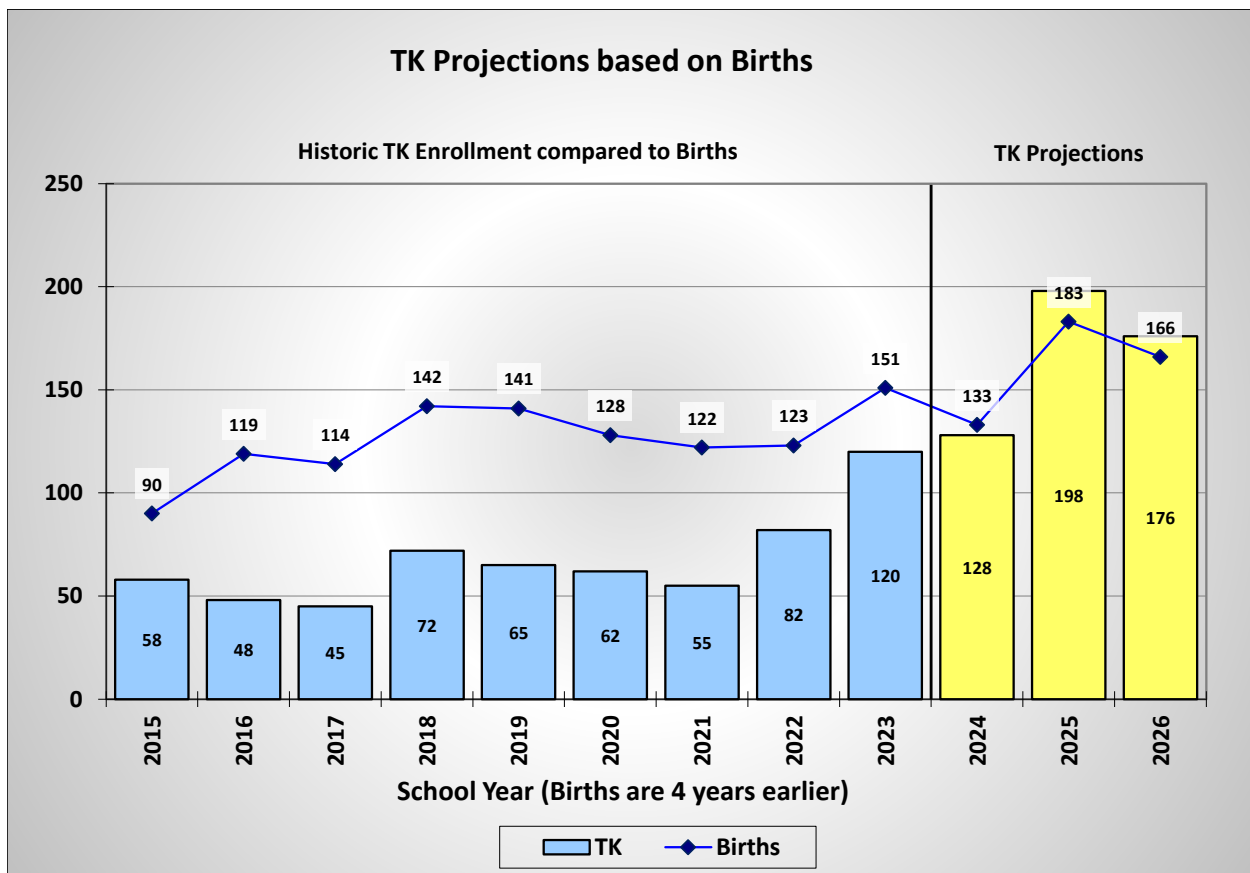
Orinda Union School District

2023/24 Demographics and Enrollment Projections

Transitional Kindergarten

The Transitional Kindergarten (TK) program started in 2012 to provide an extra year for young children to get ready for kindergarten. Currently, the TK program allows four year-olds who will turn five between September 1 and April 2. Some districts allow parents with children just outside that window to also participate in the program. Since the window for the TK program is only seven months, participation in the TK program is typically less than 55% of the total kindergarten enrollment. In most current state processes, such as CalPADS reporting, the State Building Program, and ADA, TK students are included with the kindergarten numbers.

As mentioned under "Methodology", this report addresses the growth of the TK program over the next two years to a full grade.



The TK projection for 2025/26 shows a total of 198 students and would be a full grade at that point.

DRAFT

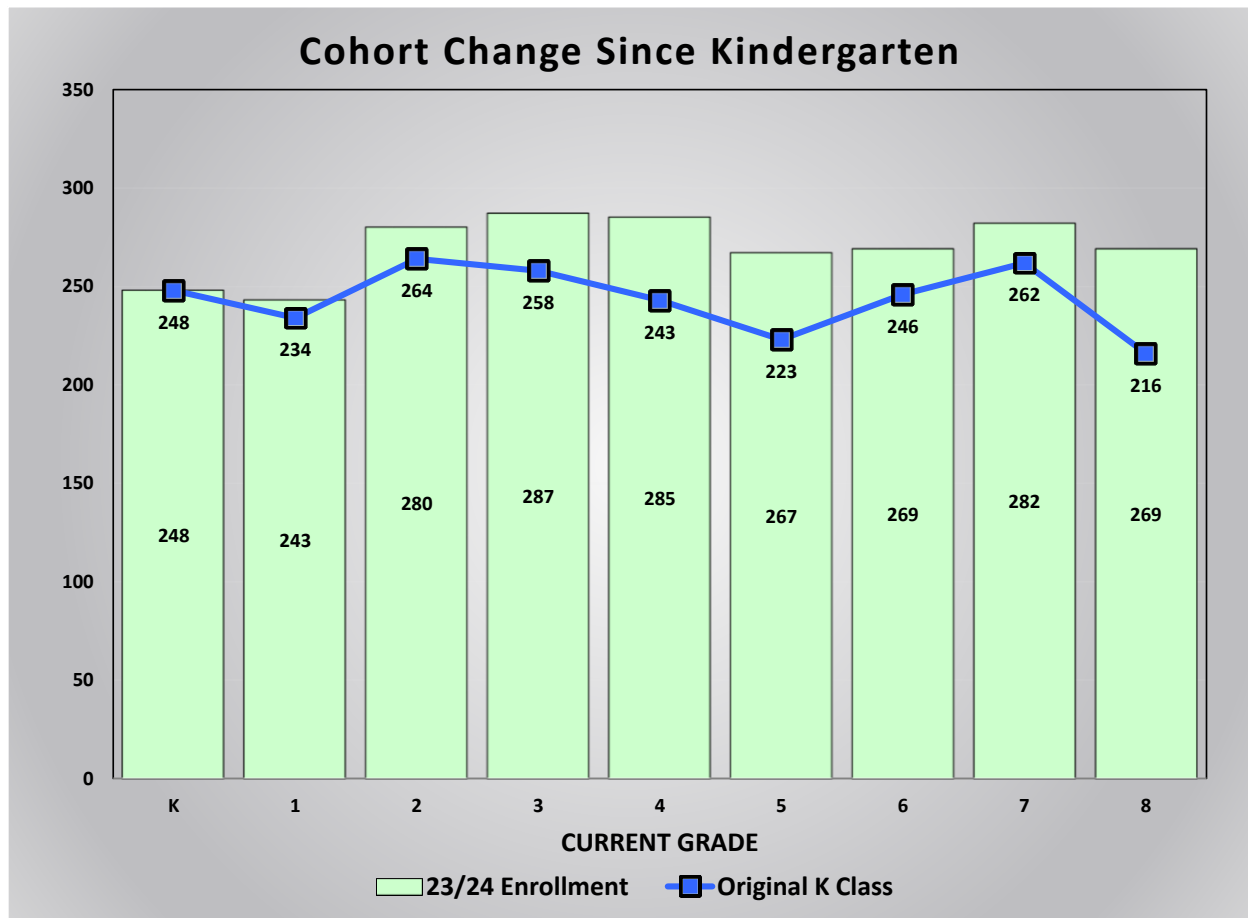
Orinda Union School District

2023/24 Demographics and Enrollment Projections

TK/K Projection Summary by School

Orinda Union School District TK/K Enrollment Planning								
	24/25		25/26		26/27		27/28	
School	TK	K	TK	K	TK	K	TK	K
Del Rey Elem	38	64	60	55	53	63	52	55
Glorietta Elem	33	64	47	55	42	63	41	55
Sleepy Hollow Elem	32	64	48	56	44	64	44	58
Wagner Ranch Elem	25	76	43	65	37	78	36	69
Totals	128	268	198	231	176	268	173	237

Retention Rates Since Kindergarten



This chart compares the original kindergarten class size to the current enrollment for each grade. For example, the current 6th grade class has 269 students and six years ago the kindergarten class had 246 students. Overall the class sizes have increased since kindergarten.

DRAFT

Orinda Union School District

2023/24 Demographics and Enrollment Projections

Historic Enrollment and Trends

Orinda Union School District Historic Enrollment and Cohorts								
Grade	CalPADS Enrollment				Historic Cohorts			Weighted Average
	20/21	21/22	22/23	23/24	20 to 21	21 to 22	22 to 23	
T K	62	55	82	120	-7	27	38	26.8
K	258	264	234	248	6	-30	14	-2.0
1	254	273	272	243	15	8	9	9.7
2	249	271	281	280	17	8	8	9.5
3	254	256	282	287	7	11	6	7.8
4	270	267	256	285	13	0	3	3.7
5	250	274	272	267	4	5	11	7.8
6	284	261	277	269	11	3	-3	1.3
7	278	285	269	282	1	8	5	5.3
8	312	277	286	269	-1	1	0	0.2
Totals	2,471	2,483	2,511	2,550	6.6	4.1	9.1	7.0
Annual Change:		12	28	39				

This chart shows the enrollment by grade level over the past four years. The cohort values were calculated for each grade and each year, along with the weighted average for each grade. A positive cohort value indicates that grade is expected to have more students than the previous grade last year. A negative value would mean that the grade has fewer students compared to the previous grade last year.

In general, a positive cohort is representative of growth and a negative cohort indicates a decline in enrollment. There are some exceptions. First grade usually has a positive cohort, as there are some students that do not attend kindergarten at public schools but arrive in first grade.

Another important item to notice is the current breakdown by grade level of the student population. Comparing the number of students in the lower grades to the upper grades can indicate potential increases or decreases in future enrollments. Also, if there is a large class or a small class, it will slowly cause a ripple in the enrollments as it advances a grade each year.

Finally, the annual change at the bottom of this chart indicates the net impact of the changes in enrollment over the past few years.

DRAFT

CLASSROOM COUNTS AND CAPACITY

It is important to understand that capacity and classroom counts may be viewed different ways for different purposes. The State School Facilities Program (SFP) considers all available teaching stations excluding physical education facilities and core facilities (e.g., libraries, multipurpose rooms, and administrative spaces), as part of the site capacity when calculating eligibility for new construction or modernization funding. The State also has its own loading standards per classroom as part of the eligibility determinations.

Another method for calculating capacity and number of classrooms is based on local District standards of class size and a definition of what is considered a full day teaching station. The District may set aside several classroom spaces defined by the SFP for specialized programs or pull-out spaces.

The classroom counts and capacities defined in this Demographics and Enrollment Projections Study represent the rooms that have been identified by Orinda Union School District administration as designated fulltime teaching stations. This count is a net count and may not take into consideration other rooms which could be used as fulltime teaching stations but are needed for other programs offered by the District.

The classroom counts are shown for each school and are used to determine the capacity. The classroom counts represent the rooms that can be used for teaching purposes at each school site. The classroom counts may not represent the current classrooms being used, as there may be unused rooms on the school site. In some cases, there may be fewer classrooms counted than current teaching stations if some of the rooms being used were designed for other purposes but are currently being used as classrooms due to overcrowding.

DRAFT

SCHOOL PROJECTIONS

This Study provides a detailed analysis of student attendance patterns and enrollment for each school. This includes a boundary map illustrating that particular school's attendance patterns along with a chart showing the projected enrollment for the next six years. These charts indicate the actual enrollment at each school over the past four years along with the projected enrollment for the next six years. In addition, the number of students living in the boundary are shown for the same time period. If there are more students attending than live in the area, then there is a net inflow. If more students live in the boundary than attend the school, then there is a net outflow.

The current capacity is shown on these charts to identify if there will be classroom space available for the students. If space is not available, then the attendance patterns will likely need to change if the additional facilities are not provided. The capacity for each school was determined by using the following loading standards for each classroom identified:

<u>Grade</u>	<u>Loading Standard</u>
TK	20
K	22
1-3	22
4-6	26
7-8	26

These loading standards are based on the current loading factors used this year and may change based on the level of funding for schools in the future.

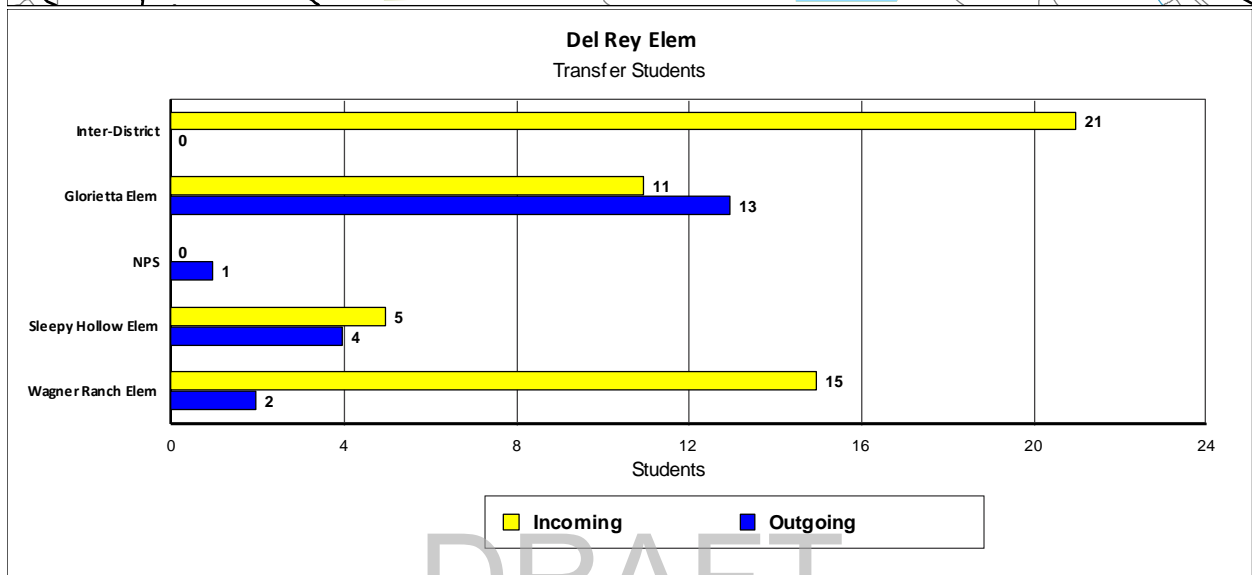
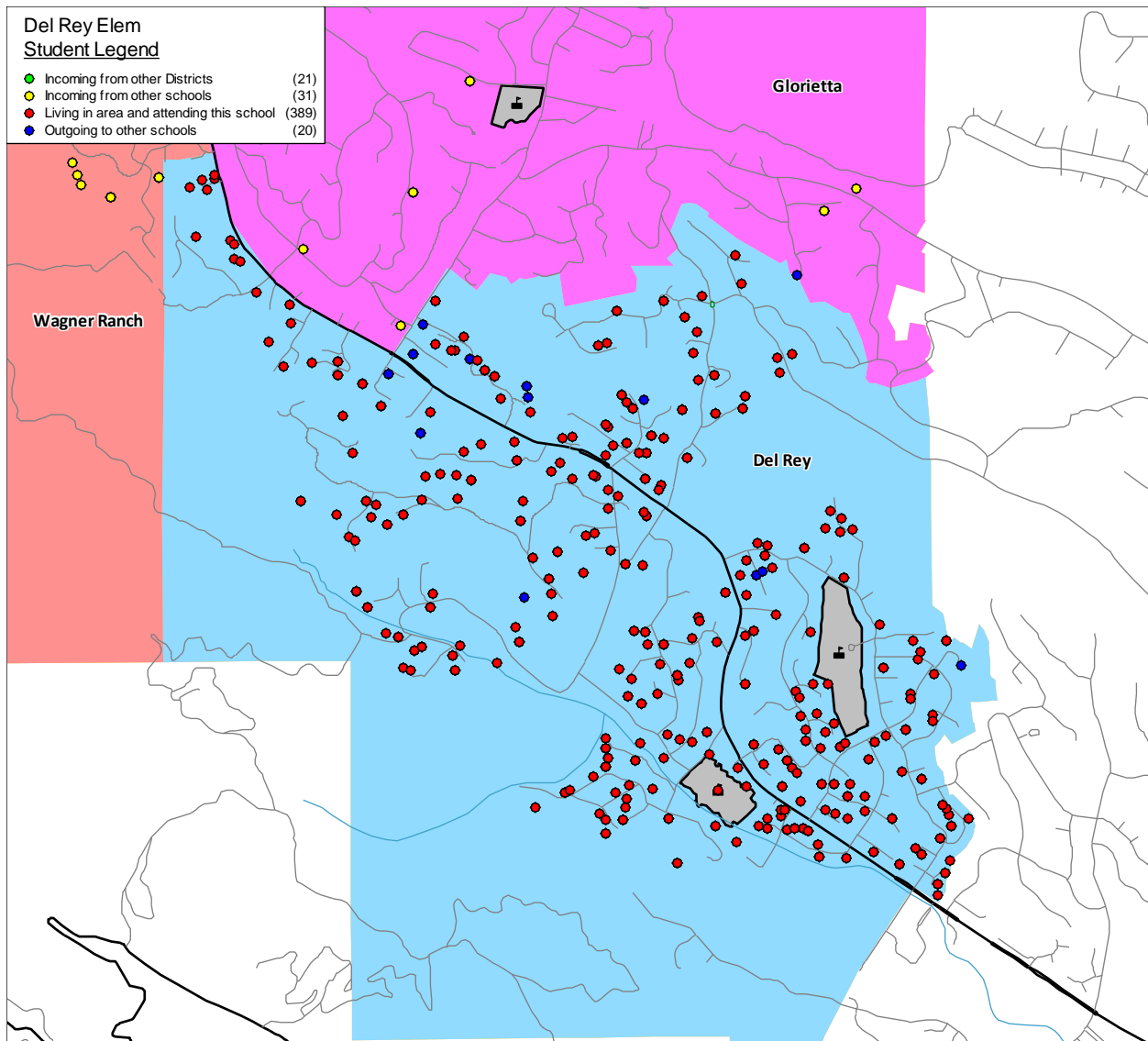
Detailed data is provided below each projection chart that shows the projected enrollment by grade for the next six years.

The Attendance Factors were determined by analyzing the current year of students to see how many Inter- and Intra-District transfers there are. Once the baseline projections are calculated for the residents in the attendance area, the Intra-District and Inter-District factors are applied to determine the projected enrollment for each school.

DRAFT

Orinda Union School District

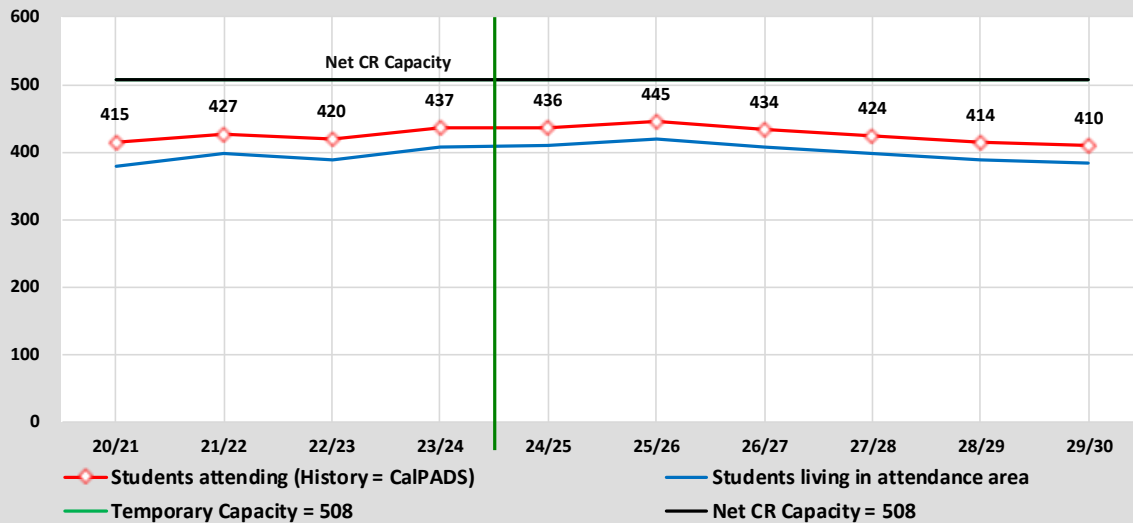
2023/24 Demographics and Enrollment Projections



Orinda Union School District

2023/24 Demographics and Enrollment Projections

Capacity & Projected Enrollment Del Rey Elem



District Loading Standards
Traditional School
All Portables Loaded
Net Classroom Count = 22
Grades Served = TK - 5

Classroom Needs Timeline

Year	Total Students*	Annual Change	Spec. Ed. Students	Net CR Capacity	Unhoused Students	Annual CR Needed	Total CR's Needed	Available Seats	Projected Housing Units
23/24	437	17	0	508	0	0	-3	71	
24/25	436	-1	0	508	0	0	-3	72	0
25/26	445	9	0	508	0	0	-3	63	0
26/27	434	-11	0	508	0	0	-4	74	0
27/28	424	-10	0	508	0	0	-3	84	0
28/29	414	-10	0	508	0	0	-4	94	0
29/30	410	-4	0	508	0	0	-4	98	0

* Based on Students Attending (Squares on Graph)
Net Classroom Count = 22

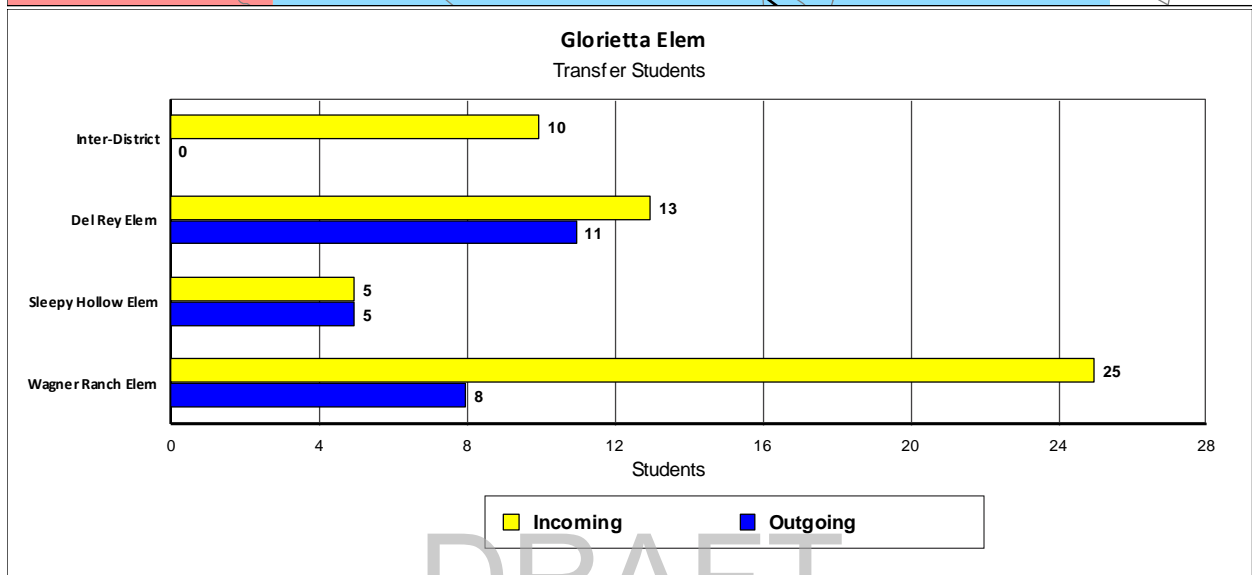
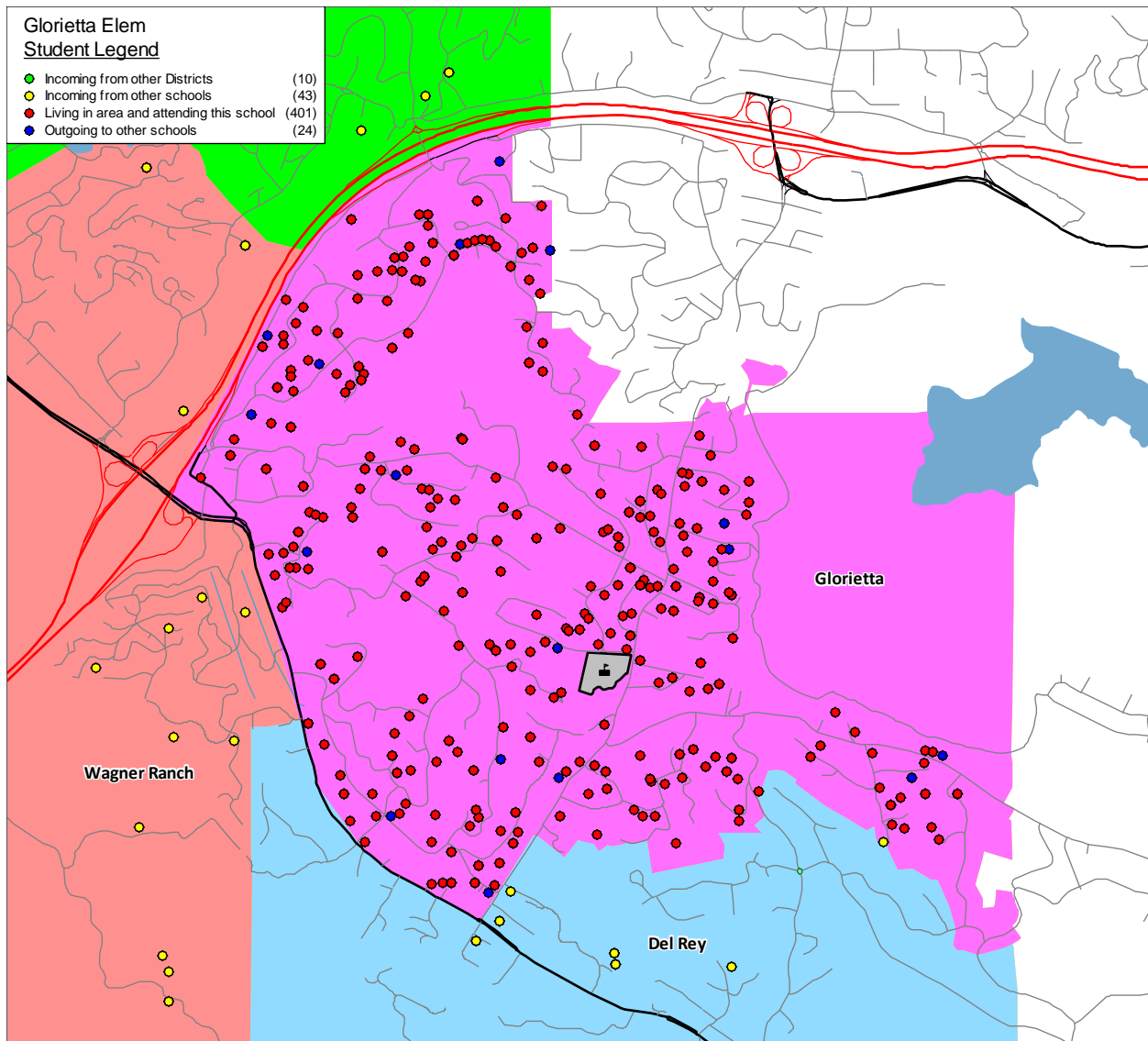
Del Rey Elem

YEAR: Grade	Current 23/24	Projected Enrollment						Cohort Average	Attendance Factors	
		24/25	25/26	26/27	27/28	28/29	29/30		Intra	Inter
T K	37	38	60	53	52	51	50	1	-2.9%	0.0%
K	54	64	55	63	55	53	51	0	0.0%	5.9%
1	60	52	62	53	61	53	51	2	-3.4%	5.1%
2	69	67	59	69	60	68	60	3	3.2%	8.1%
3	69	66	64	56	66	57	65	3	0.0%	4.5%
4	72	71	68	66	58	68	59	3	0.0%	5.9%
5	76	78	77	74	72	64	74	3	9.0%	4.5%
Totals	437	436	445	434	424	414	410	2.1	0.8%	4.8%

DRAFT

Orinda Union School District

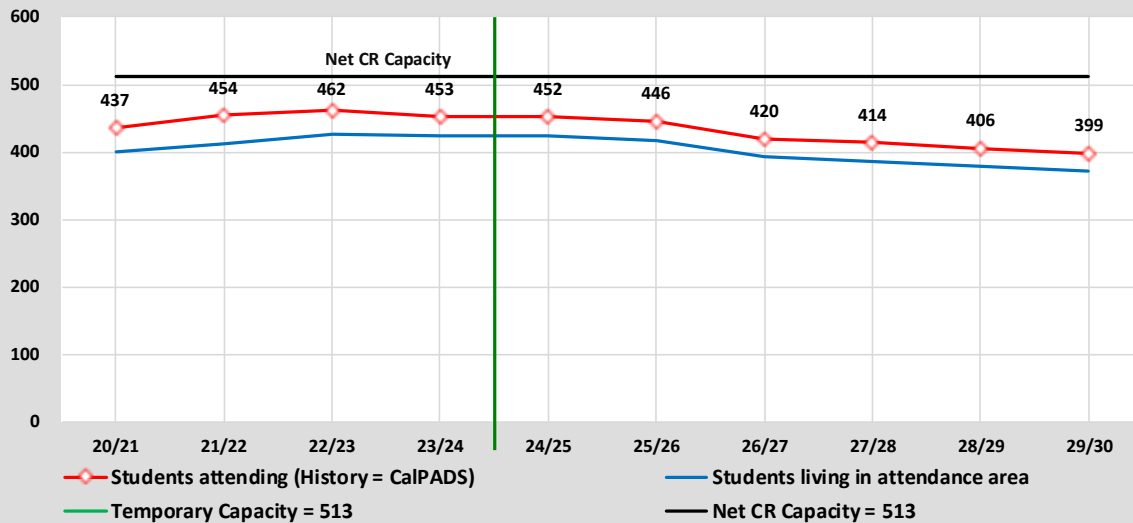
2023/24 Demographics and Enrollment Projections



Orinda Union School District

2023/24 Demographics and Enrollment Projections

Capacity & Projected Enrollment Glorietta Elem



District Loading Standards
Traditional School
All Portables Loaded
Net Classroom Count = 22
Grades Served = TK - 5

Classroom Needs Timeline

Year	Total Students*	Annual Change	Spec. Ed. Students	Net CR Capacity	Unhoused Students	Annual CR Needed	Total CR's Needed	Available Seats	Projected Housing Units
23/24	453	-9	0	513	0	0	-2	60	
24/25	452	-1	0	513	0	0	-2	61	0
25/26	446	-6	0	513	0	0	-2	67	0
26/27	420	-26	0	513	0	0	-4	93	0
27/28	414	-6	0	513	0	0	-3	99	0
28/29	406	-8	0	513	0	0	-5	107	0
29/30	399	-7	0	513	0	0	-5	114	0

* Based on Students Attending (Squares on Graph)
Net Classroom Count = 22

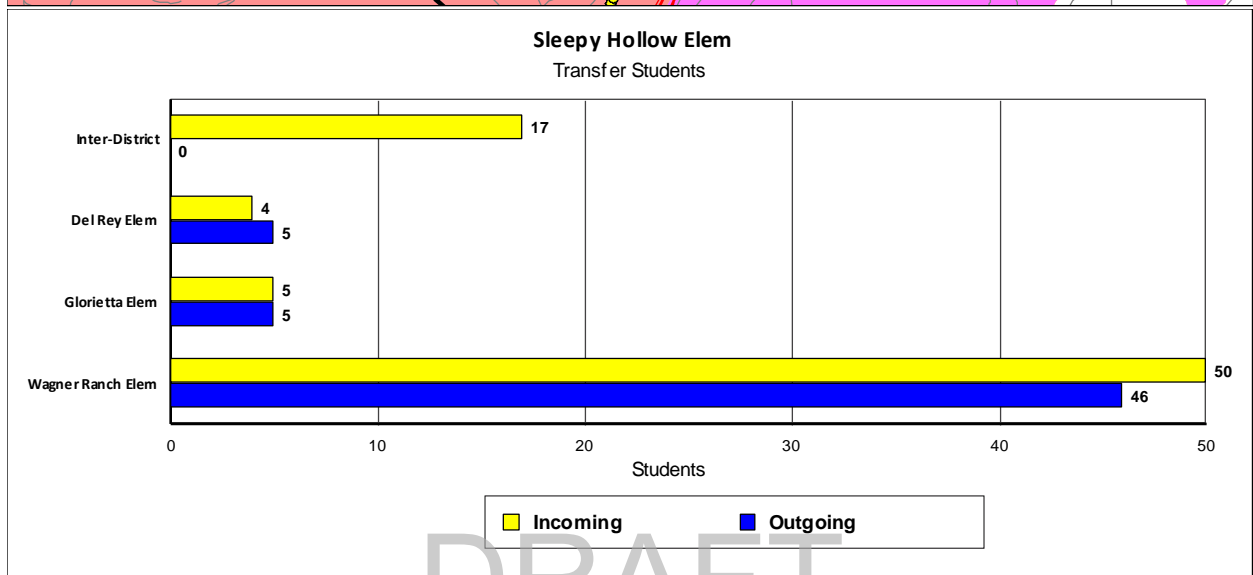
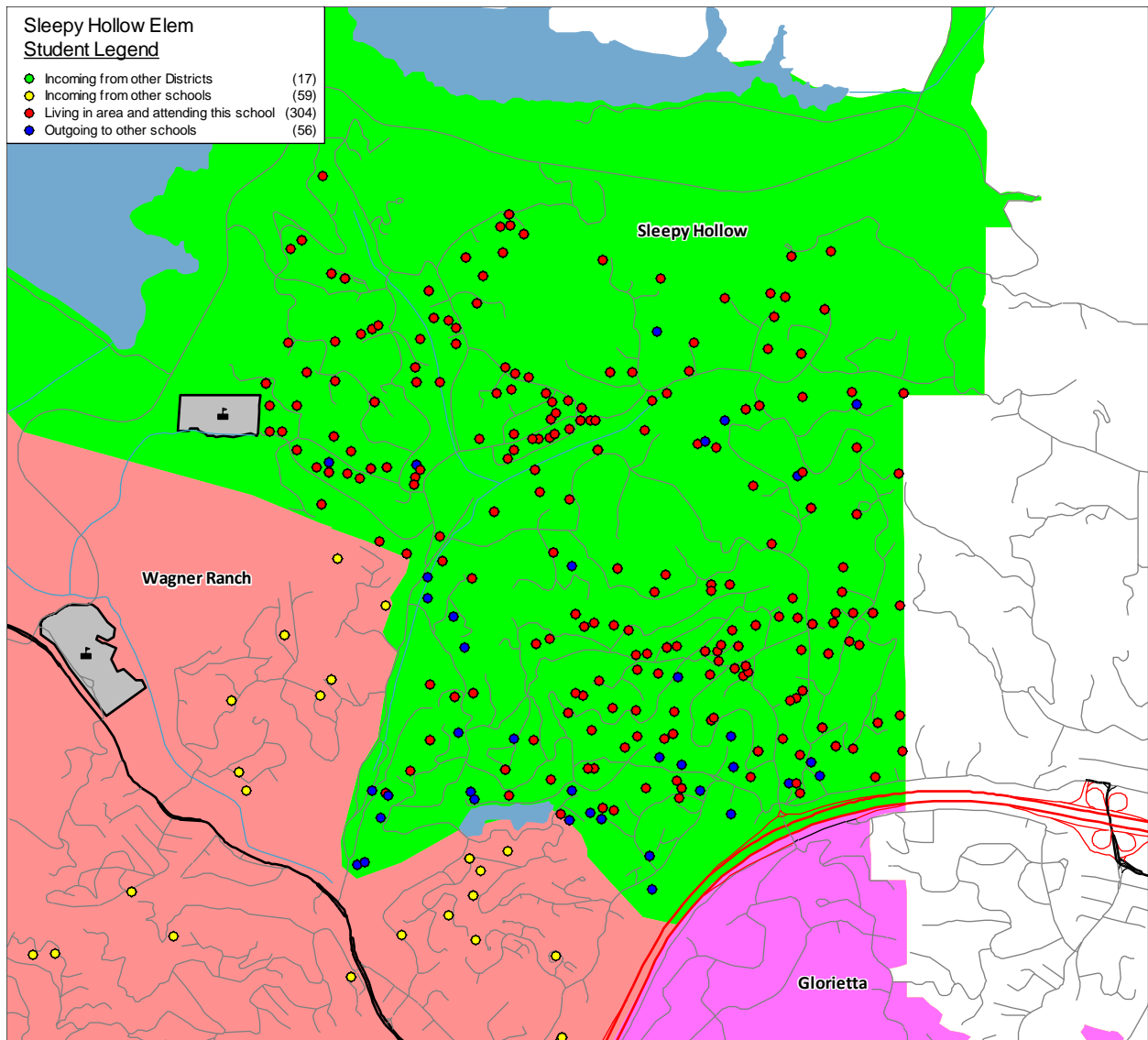
Glorietta Elem

YEAR: Grade	Current 23/24	Projected Enrollment						Cohort Average	Attendance Factors	
		24/25	25/26	26/27	27/28	28/29	29/30		Intra	Inter
T K	28	33	47	42	41	40	39	0	23.8%	9.5%
K	57	64	55	63	55	53	51	0	5.6%	0.0%
1	62	59	66	57	65	57	55	4	3.4%	1.7%
2	63	63	60	67	58	66	58	1	6.9%	1.7%
3	88	64	64	61	68	59	67	5	0.0%	3.5%
4	78	87	63	63	60	67	58	2	2.6%	0.0%
5	77	82	91	67	67	64	71	3	2.8%	4.2%
Totals	453	452	446	420	414	406	399	2.1	6.4%	2.9%

DRAFT

Orinda Union School District

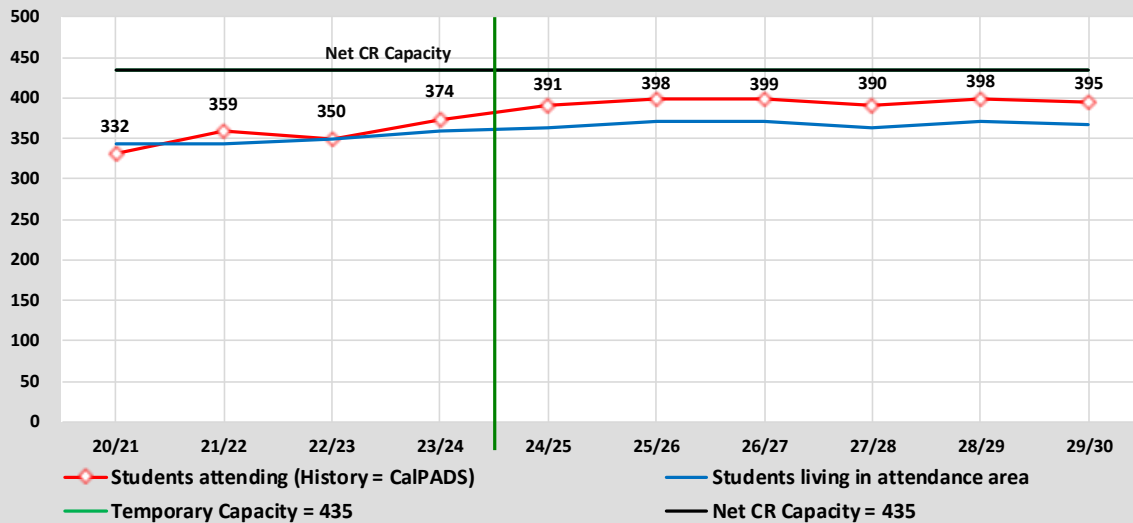
2023/24 Demographics and Enrollment Projections



Orinda Union School District

2023/24 Demographics and Enrollment Projections

Capacity & Projected Enrollment Sleepy Hollow Elem



District Loading Standards
Traditional School
All Portables Loaded
Net Classroom Count = 19
Grades Served = TK - 5

Classroom Needs Timeline

Year	Total Students*	Annual Change	Spec. Ed. Students	Net CR Capacity	Unhoused Students	Annual CR Needed	Total CR's Needed	Available Seats	Projected Housing Units
23/24	374	24	0	435	0	0	-3	61	
24/25	391	17	0	435	0	0	-1	44	0
25/26	398	7	0	435	0	0	-1	37	0
26/27	399	1	0	435	0	0	-2	36	0
27/28	390	-9	0	435	0	0	-2	45	0
28/29	398	8	0	435	0	0	-1	37	0
29/30	395	-3	0	435	0	0	-1	40	0

* Based on Students Attending (Squares on Graph)
Net Classroom Count = 19

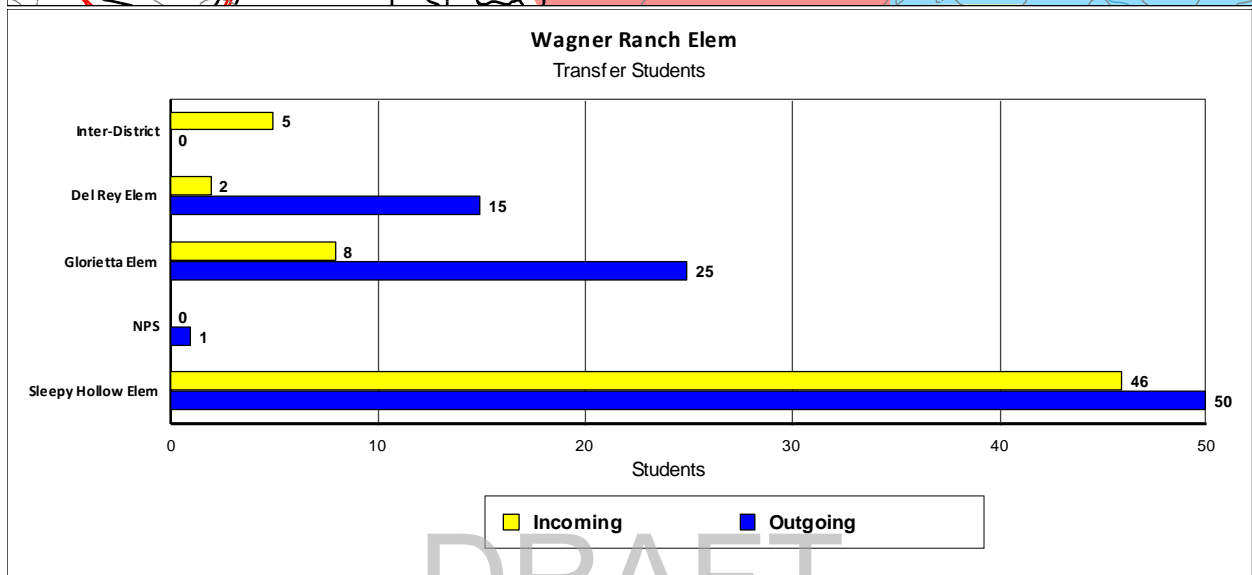
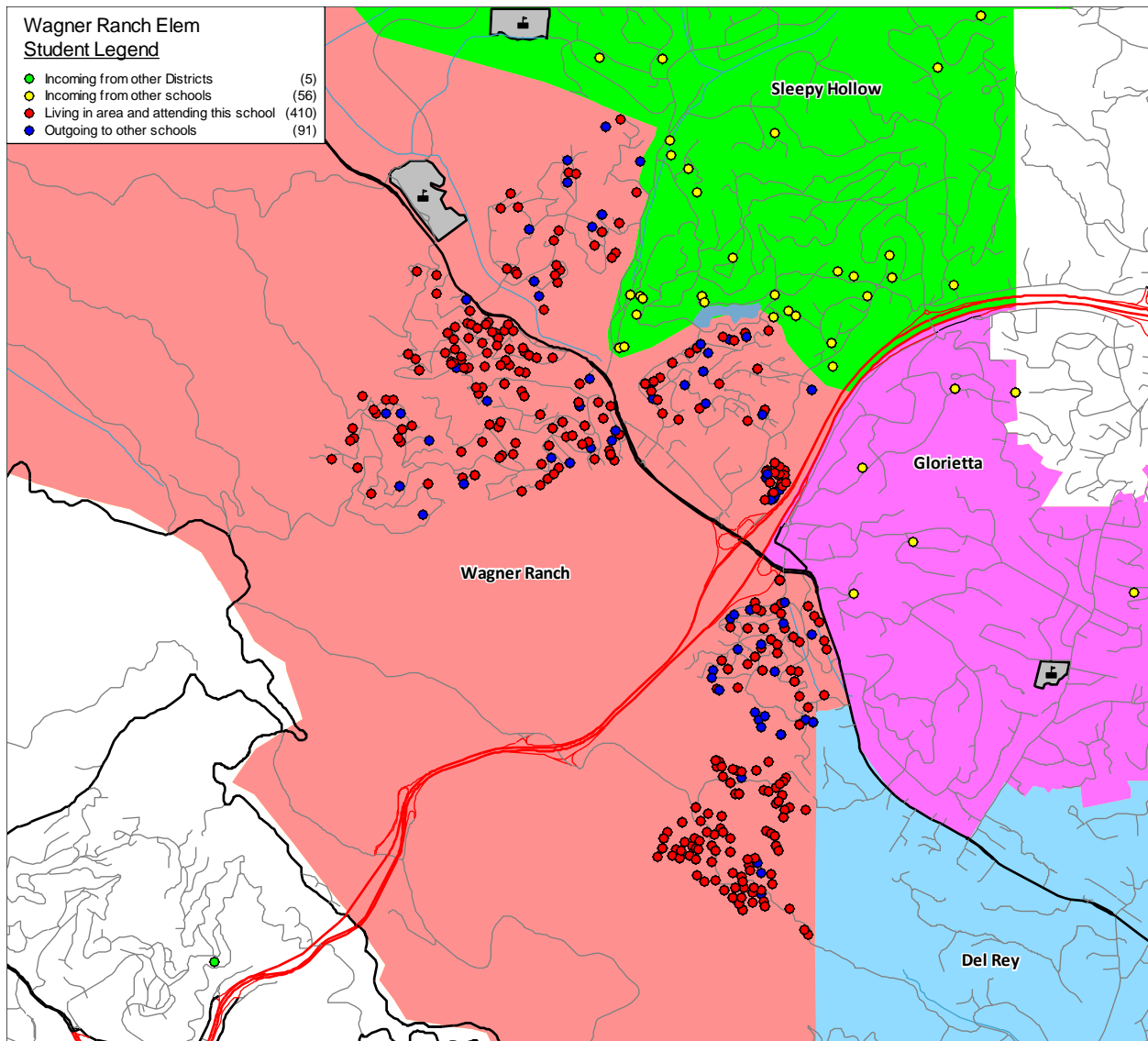
Sleepy Hollow Elem

YEAR:	Current	Projected Enrollment						Cohort	Attendance Factors	
Grade	23/24	24/25	25/26	26/27	27/28	28/29	29/30	Average	Intra	Inter
T K	34	32	48	44	44	44	44	1	12.1%	0.0%
K	59	64	56	64	58	57	56	0	7.4%	1.9%
1	55	65	70	62	70	64	63	0	16.3%	11.6%
2	61	43	53	58	50	58	52	3	-3.2%	0.0%
3	58	66	48	58	63	55	63	1	0.0%	5.5%
4	64	63	71	53	63	68	60	2	0.0%	11.3%
5	43	58	52	60	42	52	57	-1	-6.0%	2.0%
Totals	374	391	398	399	390	398	395	0.9	3.8%	4.6%

DRAFT

Orinda Union School District

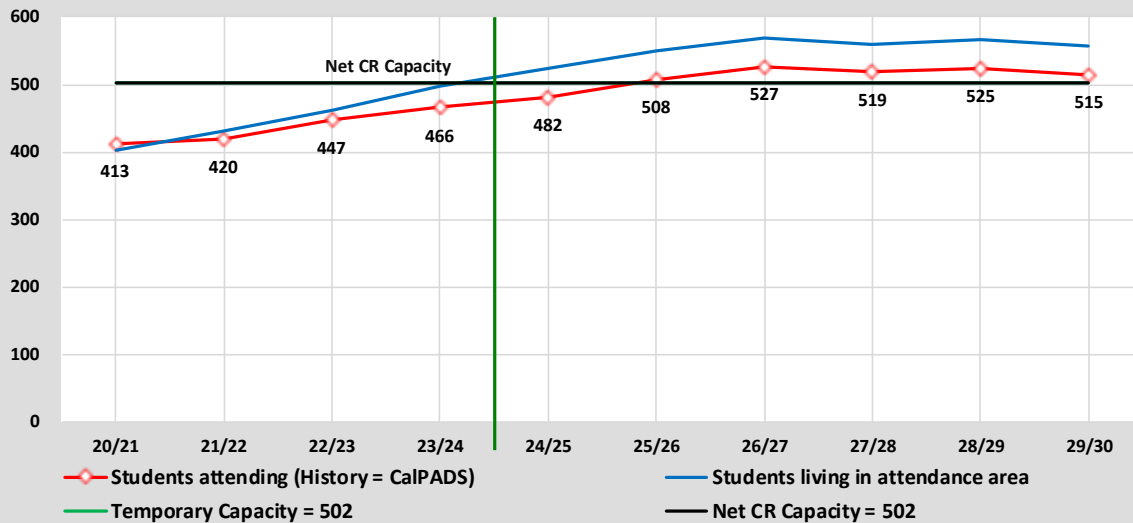
2023/24 Demographics and Enrollment Projections



Orinda Union School District

2023/24 Demographics and Enrollment Projections

Capacity & Projected Enrollment Wagner Ranch Elem



District Loading Standards
Traditional School
All Portables Loaded
Net Classroom Count = 22
Grades Served = TK - 5

Classroom Needs Timeline

Year	Total Students*	Annual Change	Spec. Ed. Students	Net CR Capacity	Unhoused Students	Annual CR Needed	Total CR's Needed	Available Seats	Projected Housing Units
23/24	466	19	0	502	0	0	-2	36	
24/25	482	16	0	502	0	0	-1	20	0
25/26	508	26	0	502	6	0	0	0	0
26/27	527	19	0	502	25	1	1	0	0
27/28	519	-8	0	502	17	0	1	0	0
28/29	525	6	0	502	23	0	1	0	0
29/30	515	-10	0	502	13	0	0	0	0

* Based on Students Attending (Squares on Graph)
Net Classroom Count = 22

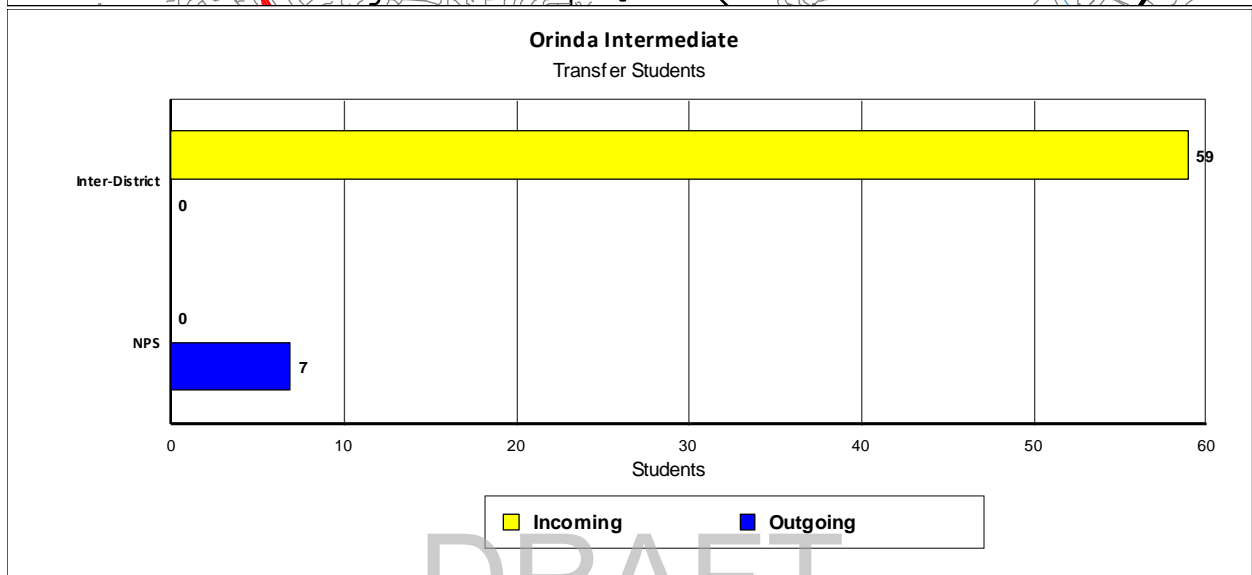
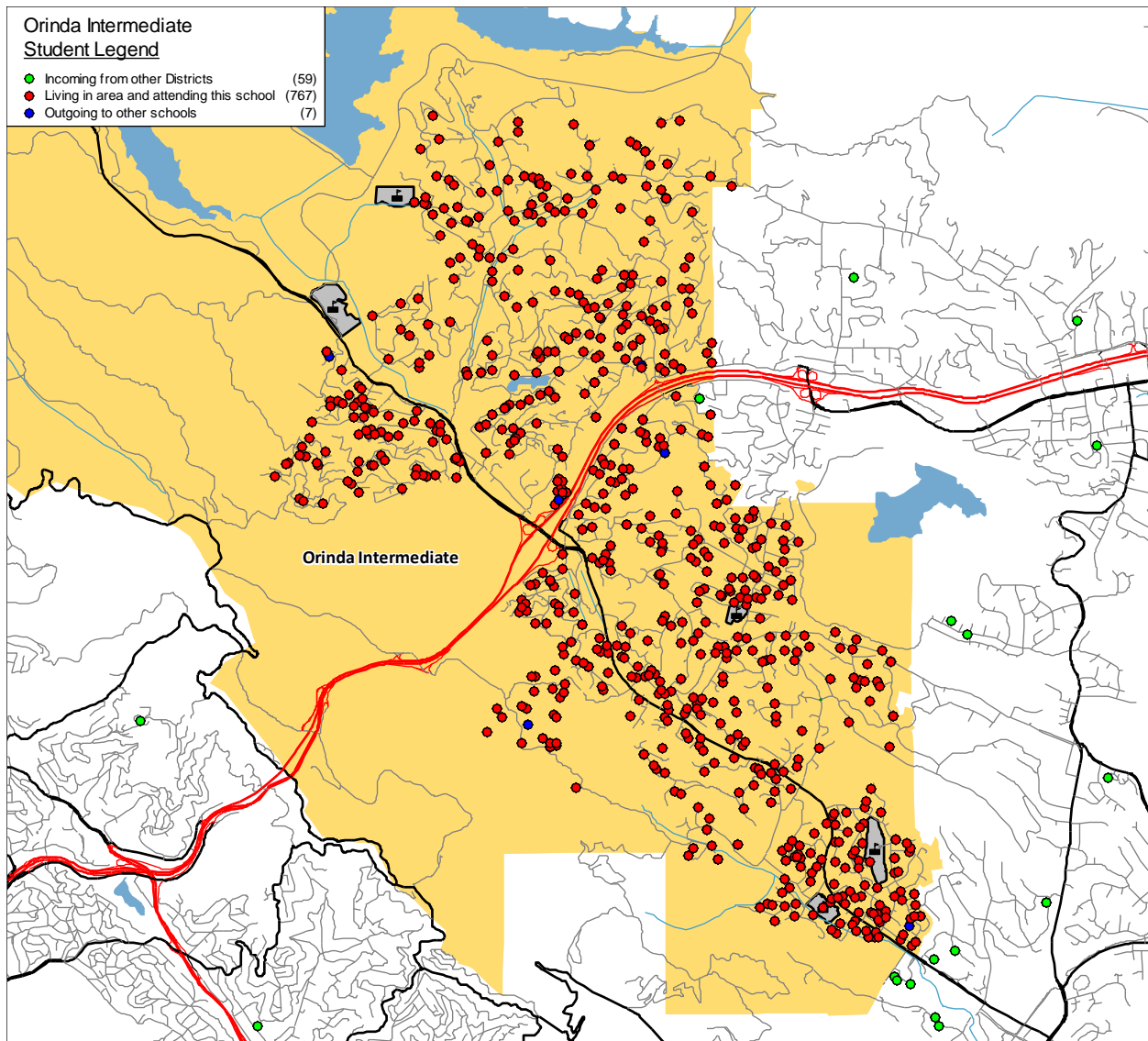
Wagner Ranch Elem

YEAR: Grade	Current 23/24	Projected Enrollment						Cohort Average	Attendance Factors	
		24/25	25/26	26/27	27/28	28/29	29/30		Intra	Inter
T K	21	25	43	37	36	35	34	1	-27.6%	0.0%
K	78	76	65	78	69	69	69	1	-11.5%	1.1%
1	66	82	80	69	82	73	73	5	-12.0%	0.0%
2	87	73	89	87	76	89	80	5	-6.5%	0.0%
3	72	95	81	97	95	84	97	1	0.0%	2.9%
4	71	62	85	71	87	85	74	-1	-8.3%	0.0%
5	71	69	65	88	74	90	88	3	-9.9%	2.8%
Totals	466	482	508	527	519	525	515	2.1	-10.8%	1.0%

DRAFT

Orinda Union School District

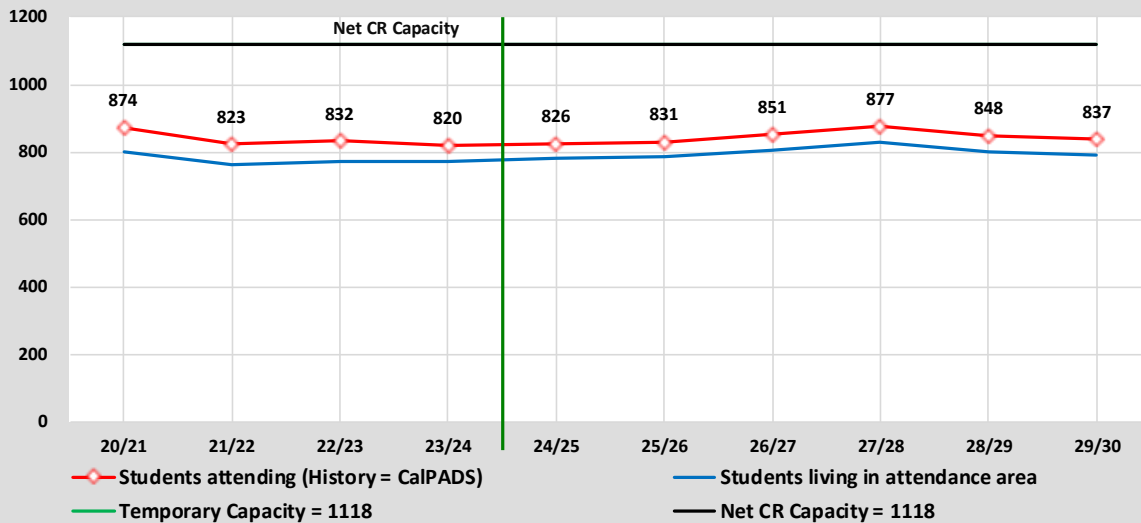
2023/24 Demographics and Enrollment Projections



Orinda Union School District

2023/24 Demographics and Enrollment Projections

Capacity & Projected Enrollment Orinda Intermediate



District Loading Standards
Traditional School
All Portables Loaded
Net Classroom Count = 43
Grades Served = 6 - 8

Classroom Needs Timeline

Year	Total Students*	Annual Change	Spec. Ed. Students	Net CR Capacity	Unhoused Students	Annual CR Needed	Total CR's Needed	Available Seats	Projected Housing Units
23/24	820	-12	0	1118	0	0	-12	298	
24/25	826	6	0	1118	0	0	-11	292	0
25/26	831	5	0	1118	0	0	-11	287	0
26/27	851	20	0	1118	0	0	-10	267	0
27/28	877	26	0	1118	0	0	-9	241	0
28/29	848	-29	0	1118	0	0	-10	270	0
29/30	837	-11	0	1118	0	0	-10	281	0

* Based on Students Attending (Squares on Graph)
Net Classroom Count = 43

Orinda Intermediate

YEAR: Grade	Current 23/24	Projected Enrollment						Cohort Average	Attendance Factors	
		24/25	25/26	26/27	27/28	28/29	29/30		Intra	Inter
6	269	266	288	289	292	259	278	-2	-2.0%	7.0%
7	282	268	265	287	288	291	258	9	-2.2%	5.1%
8	269	292	278	275	297	298	301	-2	-0.8%	11.1%
Totals	820	826	831	851	877	848	837	1.7	-1.7%	7.7%

DRAFT

Orinda Union School District

2023/24 Demographics and Enrollment Projections

Student Attendance Matrix

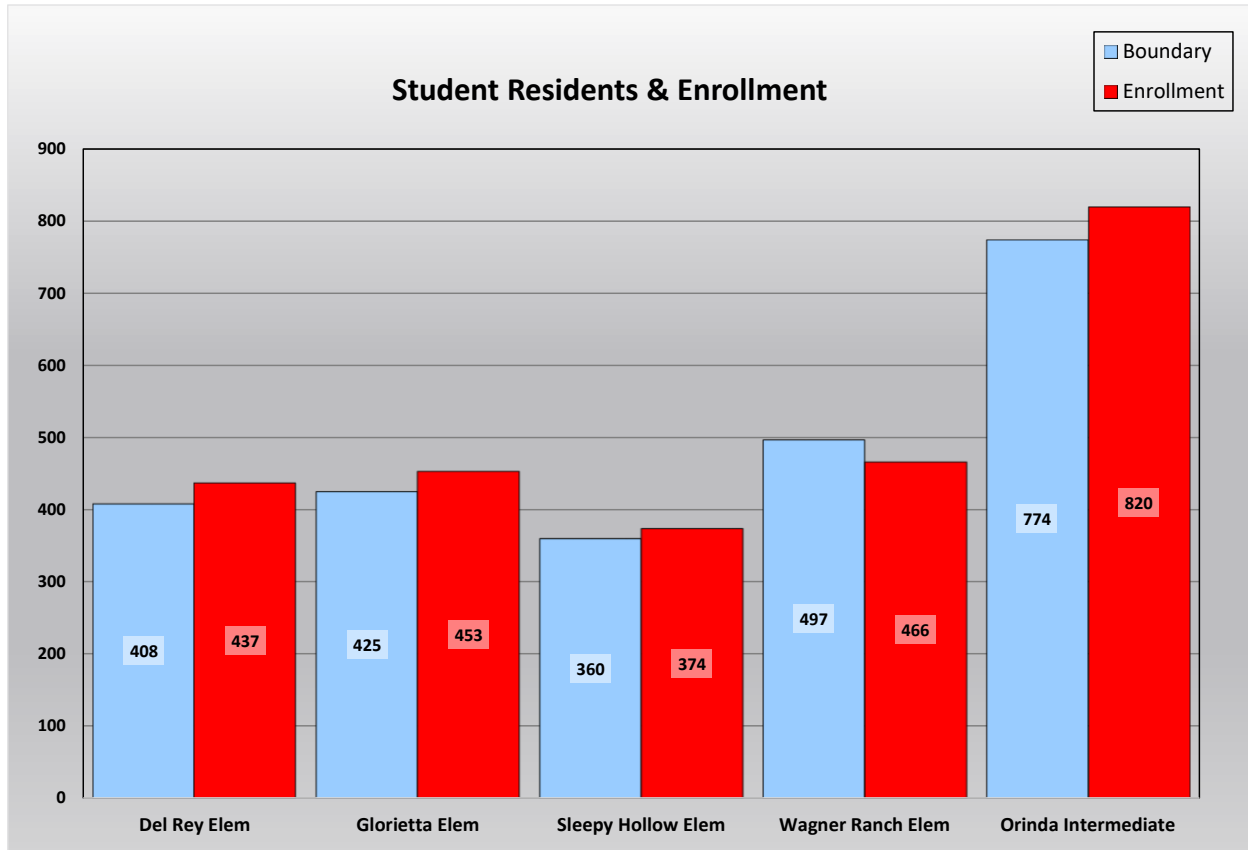
ATTENDANCE MATRIX							
R E S I D E N C E	SCHOOL: AREA	SCHOOL OF ATTENDANCE					Total Residing
		Del Rey Elem	Glorietta Elem	Sleepy Hollow Elem	Wagner Ranch Elem	Orinda Intermediate	
	Inter-District	21	10	17	5	59	112
	Del Rey Elem	389	13	4	2	0	408
	Glorietta Elem	11	401	5	8	0	425
	Sleepy Hollow Elem	5	5	304	46	0	360
	Wagner Ranch Elem	15	25	50	410	0	500
	Orinda Intermediate	0	0	0	0	767	767
	Correction Factor*	-4	-1	-6	-5	-6	-22
	Total Attending	437	453	374	466	820	2,550
Intra-Ins		31	43	59	56	0	189
Inter-Ins		21	10	17	5	59	112
Total In-Flow		52	53	76	61	59	301
Intra-Outs		19	24	56	90	0	189
Net Transfers		33	29	20	-29	59	112
% In-Flow Students		11.9%	11.7%	20.3%	13.1%	7.2%	11.8%
% Out-Flow Students		4.7%	5.6%	15.6%	18.0%	0.0%	7.4%

* The correction factor represents the difference between the student data download counts and the actual CalPADS counts.

This chart summarizes the transfers in and out of each school as were seen by the yellow dots and blue dots on the school attendance maps. In addition, the data has been analyzed to determine the total in-flow and out-flow rates for each school. The school with the largest in-flow rate is Sleepy Hollow Elementary and the school with the largest out-flow rate is Wagner Ranch Elementary.

DRAFT

Student Residency and Enrollment Comparison



This chart compares each individual school enrollment to the students that reside within the school attendance boundary. Utilizing this data helps make it easy to see which schools have the largest and smallest enrollments as well as which boundaries are most populated. Schools with more students enrolled than those living in the boundary have a net transfer into the school. This is typically found at schools with special programs such as Gate or Dual Immersion, schools housing students from overcrowded or Program Improvement (PI) schools, and schools with more capacity than the student population living in the boundary.

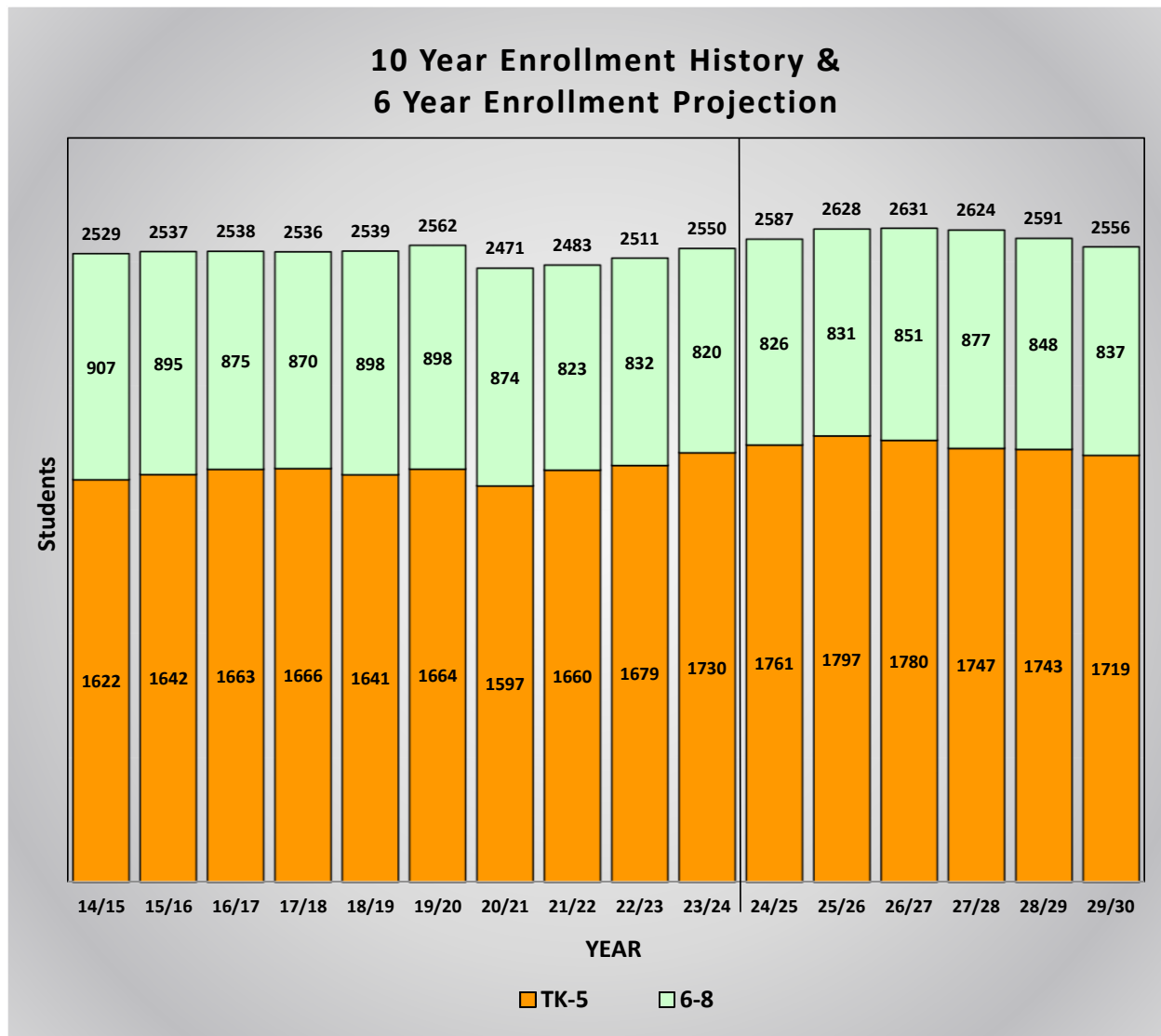
DRAFT

Orinda Union School District

2023/24 Demographics and Enrollment Projections

Ten Year Enrollment History and Six Year Enrollment Projections

This graph shows a summary of the projections for the entire District. It shows the current enrollment for 2023/24, the historic enrollment for the past nine years, and the projected enrollment for the next six years. The end result is a total of 2,556 students in the District in 2029/30.



The Orinda Union School District has had a stable enrollment over the past ten years from an enrollment of 2,529 in 2014/15 to the current enrollment of 2,550.

This graph is color coded by grade groupings:

Orange represents the historic and projected enrollment for the elementary school grades TK-5.
Green represents the historic and projected enrollment for the intermediate school grades 6-8.

The entire District enrollment is shown at the top of each bar.

Orinda Union School District

2023/24 Demographics and Enrollment Projections

Enrollment Projection Summary by Grade

The chart below shows three years of historic enrollment, the current enrollment, and six years of projected enrollment by grade.

Orinda Union School District Enrollment Projection Summary by Grade										
Grade	Historic Enrollment			Current Enrollment	Projected Enrollment					
	<u>20/21</u>	<u>21/22</u>	<u>22/23</u>	<u>23/24</u>	<u>24/25</u>	<u>25/26</u>	<u>26/27</u>	<u>27/28</u>	<u>28/29</u>	<u>29/30</u>
TK	62	55	82	120	128	198	176	173	170	167
K	258	264	234	248	268	231	268	237	232	227
1	254	273	272	243	258	278	241	278	247	242
2	249	271	281	280	246	261	281	244	281	250
3	254	256	282	287	291	257	272	292	255	292
4	270	267	256	285	283	287	253	268	288	251
5	250	274	272	267	287	285	289	255	270	290
6	284	261	277	269	266	288	289	292	259	278
7	278	285	269	282	268	265	287	288	291	258
8	312	277	286	269	292	278	275	297	298	301
Total TK-5	1,597	1,660	1,679	1,730	1,761	1,797	1,780	1,747	1,743	1,719
Total 6-8	874	823	832	820	826	831	851	877	848	837
District Totals	2,471	2,483	2,511	2,550	2,587	2,628	2,631	2,624	2,591	2,556

Enrollment Projection Summary by School

The chart below shows the current enrollment and six years of projected enrollment by school.

Orinda Union School District Enrollment Projection Summary by School							
School	Current Enrollment						
	<u>23/24</u>	<u>24/25</u>	<u>25/26</u>	<u>26/27</u>	<u>27/28</u>	<u>28/29</u>	<u>29/30</u>
Del Rey Elem	437	436	445	434	424	414	410
Glorietta Elem	453	452	446	420	414	406	399
Sleepy Hollow Elem	374	391	398	399	390	398	395
Wagner Ranch Elem	466	482	508	527	519	525	515
Elementary Totals	1,730	1,761	1,797	1,780	1,747	1,743	1,719
Orinda Intermediate	820	826	831	851	877	848	837
Intermediate Totals	820	826	831	851	877	848	837
District Totals	2,550	2,587	2,628	2,631	2,624	2,591	2,556
Annual Change		37	41	3	-7	-33	-35

DRAFT

Orinda Union School District

2023/24 Demographics and Enrollment Projections

2024/25 One Year Enrollment Projection by School and Grade

Orinda Union School District											
Enrollment Projections											
YEAR 24/25, 1 Year Proj.											
School	T K	K	1	2	3	4	5	6	7	8	TOTAL
Del Rey Elem	38	64	52	67	66	71	78	0	0	0	436
Glorietta Elem	33	64	59	63	64	87	82	0	0	0	452
Sleepy Hollow Elem	32	64	65	43	66	63	58	0	0	0	391
Wagner Ranch Elem	25	76	82	73	95	62	69	0	0	0	482
Orinda Intermediate	0	0	0	0	0	0	0	266	268	292	826
Totals	128	268	258	246	291	283	287	266	268	292	2,587
Current CalPADS	120	248	243	280	287	285	267	269	282	269	2,550
Net Change	8	20	15	-34	4	-2	20	-3	-14	23	37
Cohort Change			10	3	11	-4	2	-1	-1	10	

Orinda Union School District has a current enrollment of 2,550 students. The projected enrollment for next year shows an increase of 37 students. This one year summary analyzes the net change between the current District enrollment by school and by grade, and the projected enrollment for 2024/25.

The students living in the boundary generate the cohort factors which are calculated for the past three years and the average is determined. Those cohorts are then used to determine the students who will be residing in each attendance area for the following years. Next the attendance factor is used to determine the net enrollment for each grade. The attendance factor is determined by analyzing the current year of students to see how many Inter- and Intra-district transfers there are. The cohort change factor indicates the change in the number of students for each grade compared to the number of students in the prior grade the previous year.

These projections assume the transfers between schools remain consistent. If changes in facilities, schedules, programs or policies are made, then the patterns may be impacted.

The actual enrollment for each elementary may vary from the numbers shown depending on which sites offer TK classes.

DRAFT

SCHOOL FACILITY UTILIZATION

The following chart shows the current and projected utilization rates for each school. It has been color coded with blue representing schools with a utilization rate of under 70%, yellow representing a utilization rate of at least 70% but under 80% and red for the schools that have over 100% utilization. The utilization indicates the long term impacts of the changes in enrollment as compared to the school capacities.

School Facility Utilization			2023/24	2029/30	2023/24	2029/30
	Net	Net CR	Current	Projected	Current	Projected
<u>Elementary Schools</u>	<u>Classrooms</u>	<u>Capacity</u>	<u>Enrollment</u>	<u>Enrollment</u>	<u>Utilization</u>	<u>Utilization</u>
Del Rey Elem	22	508	437	410	86.0%	80.7%
Glorietta Elem	22	513	453	399	88.3%	77.8%
Sleepy Hollow Elem	19	435	374	395	86.0%	90.8%
Wagner Ranch Elem*	22	502	466	515	92.8%	102.6%
Sub-Totals	85	1,958	1,730	1,719	88.4%	87.8%
 <u>Intermediate Schools</u>						
Orinda Intermediate	43	1,118	820	837	73.3%	74.9%
Sub-Totals	43	1,118	820	837	73.3%	74.9%
 District Totals	 128	 3,076	 2,550	 2,556	 82.9%	 83.1%

For 2023, the school with the highest percentage of available space is Orinda Intermediate and the school that is impacted the most is Wagner Ranch Elementary.

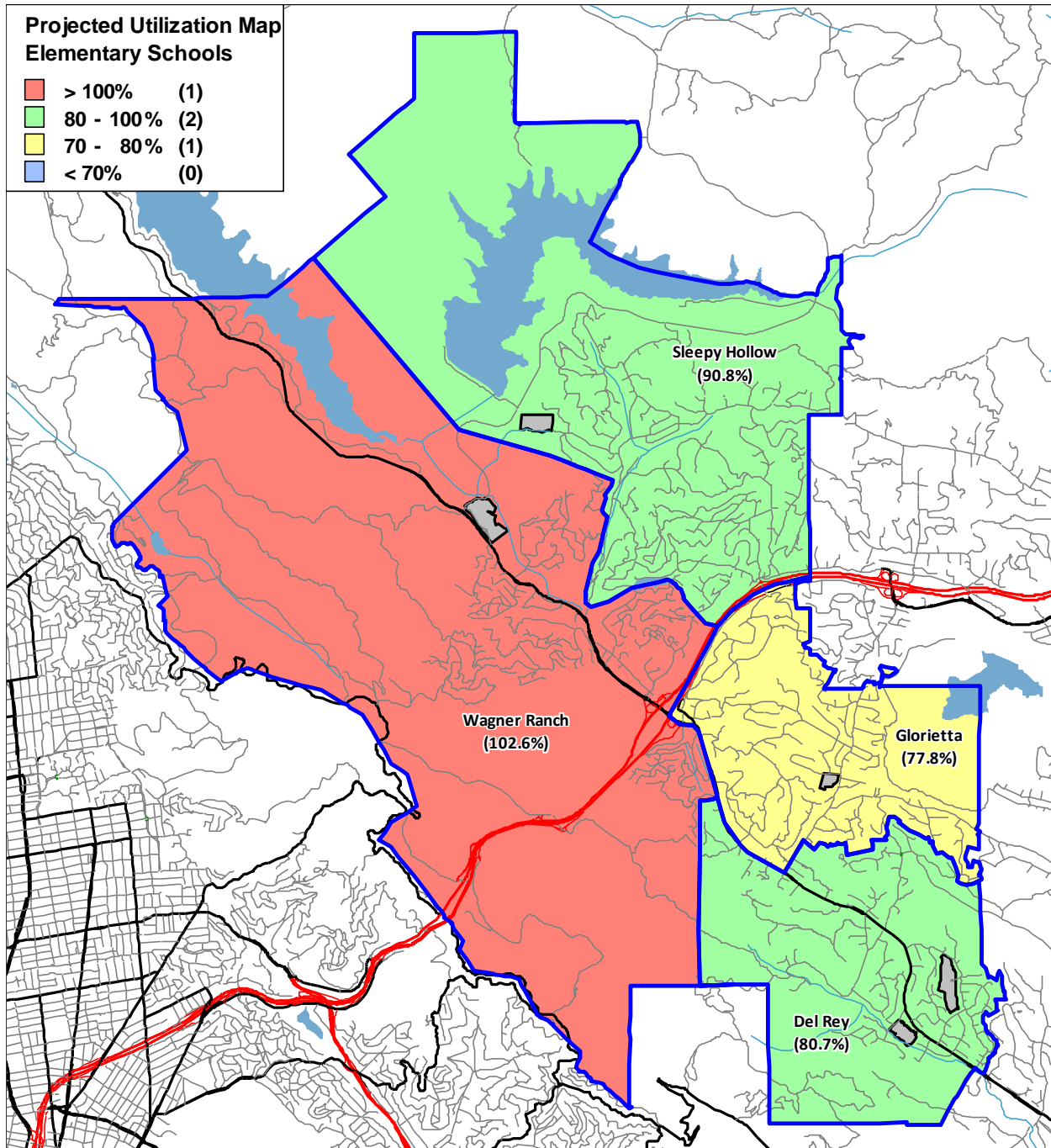
* For sites with projected enrollments already at, approaching, or beyond available CR capacity loading maximums, determinations regarding the need to add facilities, reconfigure attendance boundaries, reconfigure grade level configuration to utilize available intermediate school space are recommended.

DRAFT

Orinda Union School District

2023/24 Demographics and Enrollment Projections

The color-coded map below shows the projected utilization for the elementary schools.



DRAFT